

# NOTICE TO MARINERS

## 02.08.2017

### DUDGEON OFFSHORE WIND FARM CONSTRUCTION WORKS

**NOTICE IS HEREBY GIVEN** that construction activities are in progress at the Dudgeon Offshore Wind Farm.

Wind turbine generators will be installed until Q3 2017. All construction work is planned to be completed late 2017.

#### **Service Operation Vessel**

The ESVAGT NJORD will be performing preparation support for the operation of the wind farm and will be in regular transit between the Dudgeon site and Great Yarmouth.

#### **Wind Turbine Generator Installation**

The SEA CHALLENGER will perform installation of the wind turbine generators (WTG) from January 2017 until Q3-2017. WTG installation and commissioning work will be performed at the following locations in August - September:

Location	Easting	Northing	Lon DD	Lat DD	Depth LAT [m]
Sub-Station	391 870	5 902 955	1,378776	53,264808	-21,1
L01	391 174	5 901 522	1,368835	53,251789	-21,0
L02	391 122	5 900 148	1,368526	53,239433	-19,9
L03	391 760	5 899 631	1,378257	53,234918	-20,2
L04	392 399	5 899 114	1,388002	53,230402	-21,0
L05	393 038	5 898 596	1,397745	53,225877	-20,6
K01	392 045	5 902 246	1,381639	53,258473	-21,5
K02	391 907	5 900 928	1,380019	53,246602	-21,2
K03	392 640	5 900 334	1,391200	53,241413	-20,8
K04	393 373	5 899 739	1,402378	53,236214	-21,0
K05	393 676	5 898 079	1,407470	53,221359	-21,8
T01	392 212	5 903 533	1,383706	53,270071	-21,5
T02	392 948	5 902 936	1,394938	53,264856	-22,1
T03	394 241	5 900 466	1,415137	53,242920	-21,8
T04	394 974	5 899 873	1,426312	53,237737	-22,3
T05	394 840	5 898 551	1,424742	53,225832	-21,2

Location	Easting	Northing	Lon DD	Lat DD	Depth LAT [m]
J01	392 777	5 901 653	1,392808	53,253293	-23,1
J02	393 509	5 901 060	1,403974	53,248112	-22,5
J03	394 107	5 899 145	1,413569	53,231024	-21,7
J04	394 315	5 897 562	1,417208	53,216841	-22,3
J05	394 954	5 897 045	1,426945	53,212322	-21,2
F01	392 353	5 904 837	1,385377	53,281817	-21,7
F02	393 254	5 905 526	1,398654	53,288190	-23,2
F03	392 649	5 906 016	1,389417	53,292470	-22,8
F04	392 044	5 906 506	1,380177	53,296750	-22,4
F05	391 439	5 906 996	1,370936	53,301030	-22,0
F06	390 834	5 907 486	1,361693	53,305308	-22,3
E01	391 477	5 904 129	1,372486	53,275276	-22,2
E02	391 619	5 905 431	1,374170	53,287004	-22,4
E03	390 886	5 906 025	1,362975	53,292191	-20,7
E04	390 153	5 906 619	1,351778	53,297377	-20,6
E05	390 229	5 907 976	1,352448	53,309586	-21,5
E06	389 624	5 908 466	1,343201	53,313863	-21,1
D01	390 741	5 904 726	1,361247	53,280489	-21,7
D02	390 006	5 905 323	1,350022	53,285702	-20,9
D03	389 271	5 905 920	1,338793	53,290913	-20,1
D04	389 420	5 907 213	1,340577	53,302562	-20,2
D05	388 971	5 907 930	1,333591	53,308910	-20,3
D06	388 265	5 907 463	1,323165	53,304566	-20,3
B01	391 313	5 902 840	1,370468	53,263661	-21,5
B02	390 441	5 902 117	1,357649	53,256985	-19,9
B03	389 708	5 902 711	1,346460	53,262170	-20,5
B04	388 975	5 903 306	1,335268	53,267364	-19,3
B05	388 041	5 904 311	1,320916	53,276197	-18,2
B06	387 985	5 903 523	1,320354	53,269105	-18,2
G02	394 465	5 904 546	1,417139	53,279626	-23,6
G03	395 070	5 904 056	1,426371	53,275343	-24,3
G04	395 675	5 903 566	1,435601	53,271060	-25,1
G05	396 281	5 903 077	1,444844	53,266785	-26,4
G06	396 225	5 902 259	1,444272	53,259423	-25,6
H01	393 086	5 904 243	1,396567	53,276627	-21,4
H02	393 820	5 903 649	1,407769	53,271438	-23,5
H03	394 553	5 903 055	1,418953	53,266246	-23,9
H04	395 287	5 902 461	1,430149	53,261054	-24,4
H05	395 204	5 901 199	1,429321	53,249698	-22,5
H06	396 170	5 901 440	1,443715	53,252053	-24,5
A01	390 483	5 900 665	1,358777	53,243947	-19,5
A02	389 845	5 901 183	1,349042	53,248469	-19,6
A03	389 206	5 901 700	1,339289	53,252982	-19,0
A04	388 568	5 902 218	1,329549	53,257502	-19,2

Location	Easting	Northing	Lon DD	Lat DD	Depth LAT [m]
A05	387 929	5 902 735	1,319792	53,262013	-18,8
C01	390 580	5 903 434	1,359278	53,268847	-20,1
C02	389 848	5 904 027	1,348102	53,274024	-19,8
C03	389 117	5 904 621	1,336937	53,279209	-19,4
C04	388 097	5 905 099	1,321478	53,283289	-19,4
C05	388 153	5 905 887	1,322040	53,290382	-19,4
C06	388 209	5 906 675	1,322602	53,297474	-20,0

**COORDINATE REFERENCE SYSTEM:**

Datum: WGS84

Projection: UTM Zone 31N

## **Accommodation Vessel**

The VESTLAND CYGNUS will be on location until Q4-2017 as accommodation vessel for Turbine commissioning.

## **Commissioning activities**

For the commissioning and construction work there are several Crew Transfers Vessels operating in the wind farm area on a daily basis. This activity is ongoing and will continue until commissioning completes in Q4 2017.

## **Guard Vessel**

One of the vessels; RESOLUTE, ADVENTURE, or KRISTENBORG will be present at the site to safe guard the wind farm area.

## **GENERAL**

**MARINERS ARE HEREBY INFORMED;** that a statutory construction Safety Zone (exclusion zone) is in place at the wind farm site. This safety zone is defined by:

- A 500 metres radius around each wind turbine, offshore sub-station and their foundations whilst work is being performed as indicated by the presence of construction vessels; and
- A 50 metres radius around each wind turbine, the offshore sub-station platform and associated foundation structures installed, complete or incomplete but waiting to be commissioned as part of the Dudgeon offshore wind farm where personnel are present on, or are being landed on or being taken from the structures.

**All vessels will exhibit appropriate lights and shapes prescribed by the International Regulations for Preventing Collisions at Sea.**

**ALL VESSELS ARE REQUESTED** to give all construction and support vessels a wide berth.

**MARINERS ARE ADVISED** to navigate with caution and keep continued watch on VHF Ch. 16 when navigating the area.

A further notice to mariners will be issued when these works are completed, expected autumn 2017.

Please direct any enquiries regarding this notice to Statoil Wind Control Centre: [statoilwindcontrol@statoil.com](mailto:statoilwindcontrol@statoil.com)

A copy of this notice can also be found at:

<http://dudgeonoffshorewind.co.uk/news/notice-to-mariners>

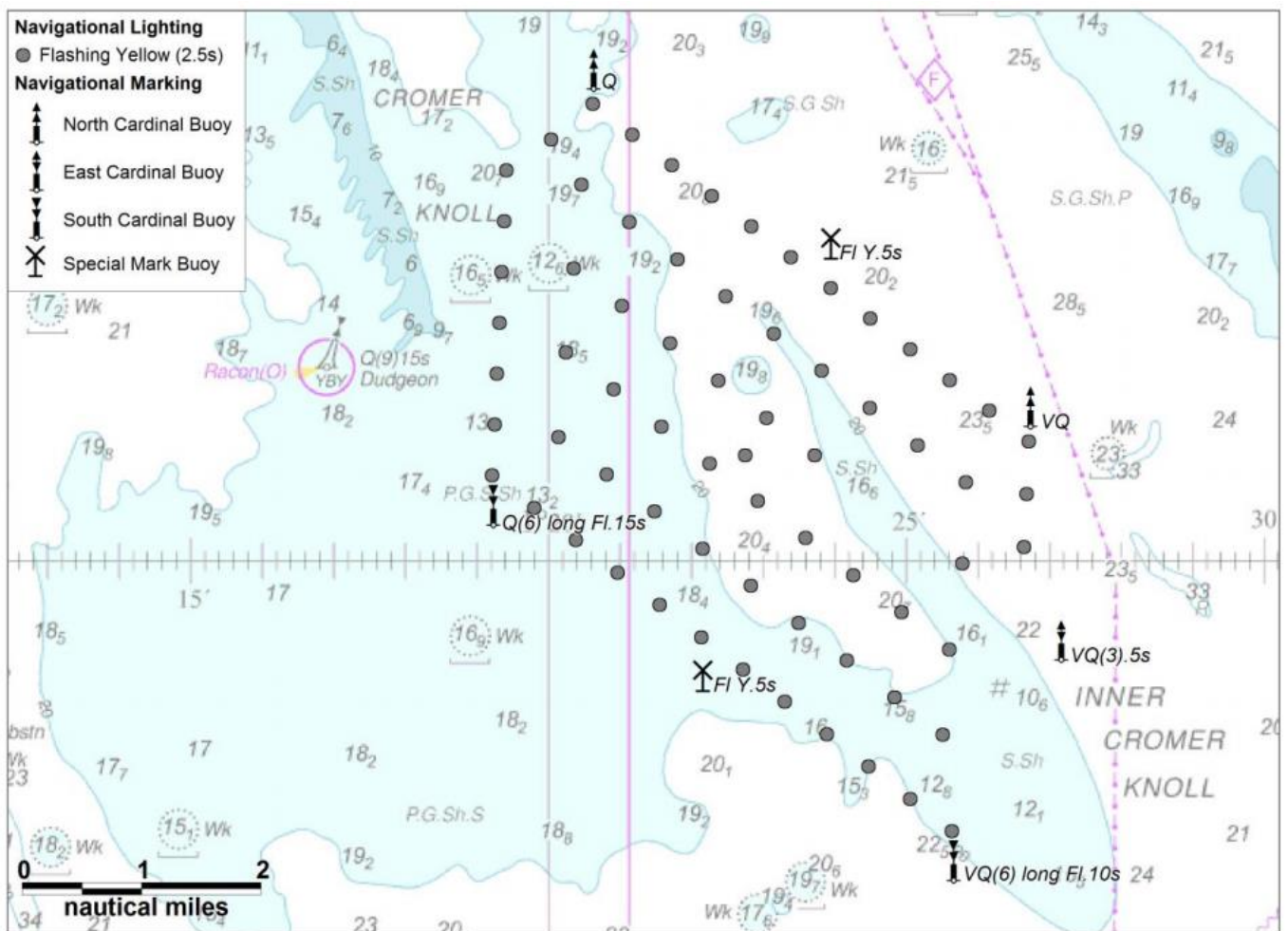
### Fishing

**The Dudgeon Wind Farm area is closed to fishing.** The coordinates for the area of the closed area are included below.

## SITE DETAILS

### Position of Navigation Buoys demarcating the Dudgeon Offshore Wind Farm site

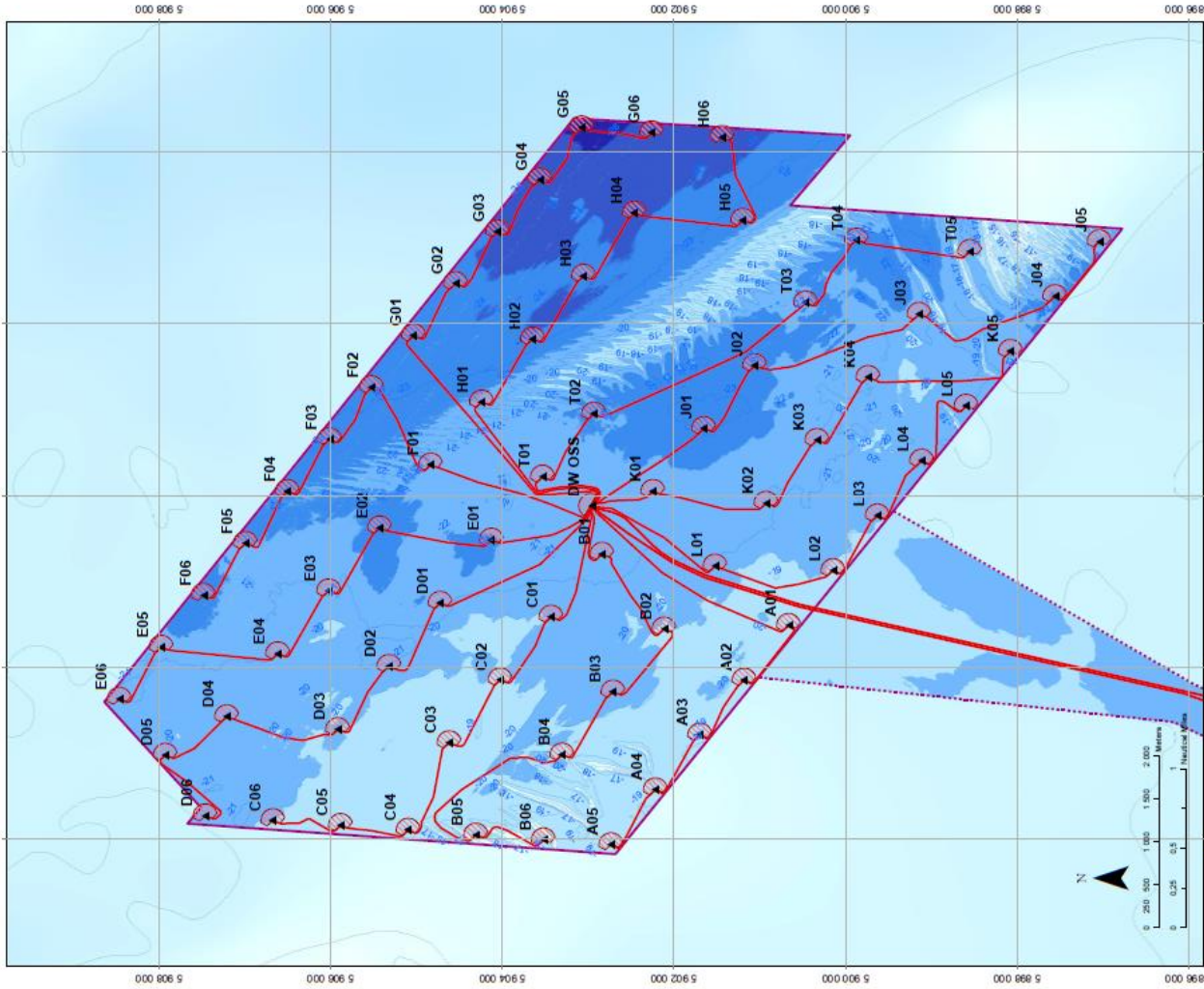
Mark	Location	Name	Latitude	Longitude	Status	Flash Character	Code	Range
North Cardinal	NW Cardinal	<b>N-DOW</b>	53° 19,102' N	1° 20,592' E	Temporary	Q	601	5nm
Special Mark	Special Mark North	<b>DOW - SM - N</b>	53° 17,631' N	1° 23,919' E	Temporary	Fl.Y.5s	328	5nm
North Cardinal	North East Cardinal	<b>NE - DOW</b>	53° 16,277' N	1° 26,691' E	Temporary	VQ	501	5nm
East Cardinal	East Cardinal	<b>E- DOW</b>	53° 14,320' N	1° 27,123' E	Temporary	VQ(3).5s	508	5nm
South Cardinal	SE Cardinal	<b>S - DUDGEON</b>	53° 12,470' N	1° 25,617' E	<b>Permanent</b>	VQ(6) long Fl.10s	516	5nm
Special Mark	Special Mark South	<b>DOW - SM - S</b>	53° 14,012' N	1° 22,132' E	Temporary	Fl.Y.5s	328	5nm
South Cardinal	SW Cardinal	<b>SW - DOW</b>	53° 15,451' N	1° 19,188' E	Temporary	Q(6) long Fl.15s	631	5nm



# WTG ID and locations (coordinates)

**WTG and Substation Locations**

WTG ID	Easting	Northing	Lon DD	Lat DD	Depth LAT
A01	380483.0	500066.0	1.38777	53.24347	-18.5
A02	388945.0	501153.0	1.34042	53.24869	-18.6
A03	388206.0	500700.0	1.33629	53.25282	-18.0
A04	385588.0	500218.0	1.32849	53.25702	-18.2
A05	387628.0	500278.0	1.31872	53.26201	-18.6
A06	391131.0	500947.0	1.32796	53.26685	-21.5
B01	380709.0	500711.0	1.34640	53.25170	-18.6
B02	386976.0	500338.0	1.33688	53.25784	-19.3
B03	388924.0	500431.0	1.32098	53.27810	-18.2
B04	387685.0	500323.0	1.32054	53.28105	-18.2
B05	380580.0	500434.0	1.350278	53.27404	-18.8
B06	388948.0	500427.0	1.34810	53.27404	-18.8
C01	388117.0	500462.0	1.33683	53.27920	-18.4
C02	388163.0	500599.0	1.321478	53.28328	-18.4
C03	388206.0	500676.0	1.322602	53.28747	-20.0
C04	390741.0	500476.0	1.361247	53.29048	-20.9
C05	390006.0	500523.0	1.35022	53.28570	-20.9
C06	388271.0	500520.0	1.338783	53.28091	-20.2
D01	388420.0	500713.0	1.340577	53.30262	-20.2
D02	388871.0	500793.0	1.333581	53.30891	-20.3
D03	388265.0	500746.0	1.323165	53.30466	-20.3
D04	391477.0	500412.0	1.374170	53.27527	-22.2
D05	391610.0	500431.0	1.374170	53.27527	-22.2
D06	390889.0	500025.0	1.329275	53.28218	-20.7
E01	390153.0	500816.0	1.351778	53.29737	-20.6
E02	390230.0	500791.0	1.32448	53.30686	-21.5
E03	388254.0	500946.0	1.343201	53.31383	-21.1
E04	392353.0	500465.0	1.368377	53.28187	-21.7
E05	392326.0	500526.0	1.368017	53.28160	-23.2
F01	392326.0	500526.0	1.368017	53.28160	-23.2
F02	392326.0	500526.0	1.368017	53.28160	-23.2
F03	392326.0	500526.0	1.368017	53.28160	-23.2
F04	392326.0	500526.0	1.368017	53.28160	-23.2
F05	391430.0	500696.0	1.370638	53.30103	-22.0
F06	391430.0	500696.0	1.370638	53.30103	-22.0
G01	380834.0	500749.0	1.361683	53.30538	-22.3
G02	388980.0	500036.0	1.407890	53.29308	-23.6
G03	394465.0	500656.0	1.417139	53.27928	-24.3
G04	388970.0	500486.0	1.426871	53.27543	-24.3
G05	388975.0	500356.0	1.426871	53.27109	-25.1
G06	388975.0	500257.0	1.444272	53.26603	-26.4
H01	390280.0	500434.0	1.366567	53.27693	-20.4
H02	393820.0	500384.0	1.407789	53.27148	-23.9
H03	394453.0	500365.0	1.418863	53.26746	-23.9
H04	395287.0	500461.0	1.430149	53.26104	-24.4
H05	395204.0	500189.0	1.428321	53.24968	-22.5
H06	390170.0	500144.0	1.443716	53.25063	-24.5
I01	392212.0	500363.0	1.383706	53.27071	-21.5
I02	392248.0	500396.0	1.394638	53.26466	-22.1
I03	394241.0	500468.0	1.416137	53.24202	-21.8
I04	394674.0	500673.0	1.428312	53.23737	-22.3
I05	394640.0	500653.0	1.426288	53.23393	-23.1
I06	392777.0	500165.0	1.362808	53.25393	-23.1
J01	393509.0	500106.0	1.403974	53.24812	-22.5
J02	394107.0	500145.0	1.413589	53.23104	-21.7
J03	394315.0	500765.0	1.417208	53.21694	-22.3
J04	394654.0	500704.0	1.420845	53.21232	-21.2
J05	392265.0	500246.0	1.381639	53.25947	-21.5
K01	391807.0	500062.0	1.381300	53.24143	-20.8
K02	392940.0	500034.0	1.402378	53.23621	-21.0
K03	393373.0	500079.0	1.404770	53.22139	-21.8
K04	393970.0	500152.0	1.388836	53.25178	-21.0
L01	391174.0	500146.0	1.368826	53.25789	-18.9
L02	391700.0	500663.0	1.382657	53.24918	-20.2
L03	391700.0	500663.0	1.382657	53.24918	-20.2
L04	393230.0	500659.0	1.397245	53.23577	-21.0
L05	393230.0	500659.0	1.397245	53.23577	-21.0
L06	391430.0	500696.0	1.370638	53.30408	-21.1



**Legend Main Map**

- ▲ Evacuation Zone
- Sub Station
- Planned Interarray Cable Route
- Planned Export Cable Route
- Consented Field Outline
- Bathymetry (m rel. to LAT)
  - < -26
  - 24 -26
  - 22 -24
  - 20 -22
  - 18 -20
  - 16 -18
  - 14 -16
  - 12 -14

**Dudgeon Offshore Windpark**

STATIONARY REFERENCE SYSTEM  
 Prime Meridian: UTM Zone 31N  
 Horizontal Datum: WGS 84  
 Vertical Datum: Mean Sea Level

WTG and Substation Locations

UK / North Norfolk

Scale: 1:50000

Map ID: C177-DOW-N-XE-0001-01

This map features bathymetry from seabed survey: ST13504 DOWF Sub and Seabed Mapping (2013) according to the subcontractor's error budget for this survey the accuracy is as follows:

The (horizontal) accuracy for navigation is +/- 20 cm (horizontal determined by the dynamic position calibration for primary and secondary navigation system)

The (vertical) accuracy bathymetry: At 20m water depth the Total Vertical Uncertainty is +/- 27cm. At 50m water depth the Total Vertical Uncertainty is +/- 33 cm.

## CONSTRUCTION AND GUARD VESSEL's CONTACT DETAILS

### ESVAGT NJORD



**Call sign:** OWZN2

**Bridge Phone:** VSAT.TEL: +45 32 71 26 89; / GSM: +45 32 71 26 85

**E-mail:** njord@esvagtvesel.com

### SEA CHALLENGER



**Call sign:** OWLQ2

**Bridge Phone:** V-sat: +45 89 88 90 10

**Master phone:** vsat +45 89 88 90 11 / GSM +45 52 13 95 80

**E-mail:** seachallenger@a2sea.com / Master mast\_sc@a2sea.com



## VESTLAND CYGNUS



**Callsign:** C6BW7

**Bridge Phone:** VSAT.TEL: +4723677230; +4723677230 / GSM: +47 41 43 02 07

**E-mail :** [captain.cygnus@vestlandoffshore.no](mailto:captain.cygnus@vestlandoffshore.no) ; [bridge.cygnus@vestlandoffshore.no](mailto:bridge.cygnus@vestlandoffshore.no)

## ADVENTURE



**Callsign:** 2IFE4

**Bridge Phone:** V-sat 01947750717

**E-mail:** [adventureGS@gmail.com](mailto:adventureGS@gmail.com) / [adventure.guard1@gmail.com](mailto:adventure.guard1@gmail.com)

## Resolute



**Callsign:** MLPD5

**Bridge Phone:** +44 284 179 8209

**E-mail:** [resolute.guard1@gmail.com](mailto:resolute.guard1@gmail.com)

## GV Kristenborg



**Callsign:** VQBG9

**Bridge Phone:** Sat. Phone: 00881677723605, mobile: 07786554685

**E-mail:** [kristenborg@e-catch.co.uk](mailto:kristenborg@e-catch.co.uk)