



# **NOTICE TO MARINERS**

**19.06.2018**

## **DUDGEON OFFSHORE WIND FARM Failure of Navigation Lights, Foghorn and Aviation / SAR lights**

**NOTICE IS HEREBY GIVEN** that we have had a failure of Navigation, lights, foghorn sound signal and aviation / SAR lights on the below turbines or WTG's.

**WTG DAA A5 Position 53° 15,721'N      1° 19,188'E**

All vessels in the Dudgeon Wind farm location are advised to give a wide berth to the wind farm and proceed with caution.

We will try to reinstall over the coming 7 days.



The Dudgeon wind farm is now operating and there will be various vessels within the wind farm including the SOV Njord and Dalby Wharfe CTV.

**Service Operation Vessel**

The ESVAGT NJORD is performing support for the operation of the wind farm and will be in regular transit between the Dudgeon site and Great Yarmouth.

**Crew transfer vessels**

The CTV DALBY WHARFE is performing support for the operation of the wind farm and will be in regular transit between the Dudgeon site and Great Yarmouth.

**Wind Turbine Generator**

WTG	Easting	Northing	Lon DD MM, m	Lat DD MM,m	Depth LAT	WTG	Easting	Northing	Lon DD MM,m	Lat DD MM,m	Depth LAT
DAE A1	390483	5900665	1° 21,527' E	53° 14,637' N	-19.5	DKC F6	390834	5907486	1° 21,702' E	53° 18,318' N	-22.3
DAD A2	389845	5901183	1° 20,942' E	53° 14,908' N	-19.6	DKH G1	393859	5905036	1° 24,473' E	53° 17,034' N	-23.6
DAC A3	389206	5901700	1° 20,357' E	53° 15,179' N	-19.0	DKJ G2	394465	5904546	1° 25,028' E	53° 16,778' N	-23.6
DAB A4	388568	5902218	1° 19,773' E	53° 15,450' N	-19.2	DKK G3	395070	5904056	1° 25,582' E	53° 16,521' N	-24.3
DAA A5	387929	5902735	1° 19,188' E	53° 15,721' N	-18.8	DKL G4	395675	5903566	1° 26,136' E	53° 16,264' N	-25.1
DDE B1	391313	5902840	1° 22,228' E	53° 15,820' N	-21.5	DKM G5	396281	5903077	1° 26,691' E	53° 16,007' N	-26.4
DCD B2	390441	5902117	1° 21,459' E	53° 15,419' N	-19.9	DJM G6	396225	5902259	1° 26,656' E	53° 15,565' N	-25.6
DCC B3	389708	5902711	1° 20,788' E	53° 15,730' N	-20.5	DHG H1	393086	5904243	1° 23,794' E	53° 16,598' N	-21.4



<b>DCB B4</b>	388975	5903306	1° 20,116' E	53° 16,042' N	-19.3	<b>DHH H2</b>	393820	5903649	1° 24,466' E	53° 16,286' N	-23.5
<b>DCA B5</b>	388041	5904311	1° 19,255' E	53° 16,572' N	-18.2	<b>DHJ H3</b>	394553	5903055	1° 25,137' E	53° 15,975' N	-23.9
<b>DBA B6</b>	387985	5903523	1° 19,221' E	53° 16,146' N	-18.2	<b>DHK H4</b>	395287	5902461	1° 25,809' E	53° 15,663' N	-24.4
<b>DDD C1</b>	390580	5903434	1° 21,557' E	53° 16,131' N	-20.1	<b>DFK H5</b>	395204	5901199	1° 25,759' E	53° 14,982' N	-22.5
<b>DDC C2</b>	389848	5904027	1° 20,886' E	53° 16,441' N	-19.8	<b>DHM H6</b>	396170	5901440	1° 26,623' E	53° 15,123' N	-24.5
<b>DDB C3</b>	389117	5904621	1° 20,216' E	53° 16,753' N	-19.4	<b>DDG J1</b>	392777	5901653	1° 23,568' E	53° 15,198' N	-23.1
<b>DDA C4</b>	388097	5905099	1° 19,289' E	53° 16,997' N	-19.4	<b>DDH J2</b>	393509	5901060	1° 24,238' E	53° 14,887' N	-22.5
<b>DEA C5</b>	388153	5905887	1° 19,322' E	53° 17,423' N	-19.4	<b>DCJ J3</b>	394107	5899145	1° 24,814' E	53° 13,861' N	-21.7
<b>DFA C6</b>	388209	5906675	1° 19,356' E	53° 17,848' N	-20.0	<b>DAL J4</b>	394315	5897562	1° 25,032' E	53° 13,010' N	-22.3
<b>DFD D1</b>	390741	5904726	1° 21,675' E	53° 16,829' N	-21.7	<b>DAM J5</b>	394954	5897045	1° 25,617' E	53° 12,739' N	-21.2
<b>DFC D2</b>	390006	5905323	1° 21,001' E	53° 17,142' N	-20.9	<b>DDF K1</b>	392045	5902246	1° 22,898' E	53° 15,508' N	-21.5
<b>DFB D3</b>	389271	5905920	1° 20,328' E	53° 17,455' N	-20.1	<b>DCF K2</b>	391907	5900928	1° 22,801' E	53° 14,796' N	-21.2
<b>DHB D4</b>	389420	5907213	1° 20,435' E	53° 18,154' N	-20.2	<b>DCG K3</b>	392640	5900334	1° 23,472' E	53° 14,485' N	-20.8
<b>DHA D5</b>	388971	5907930	1° 20,015' E	53° 18,535' N	-20.3	<b>DCH K4</b>	393373	5899739	1° 24,143' E	53° 14,173' N	-21.0
<b>DGA D6</b>	388265	5907463	1° 19,390' E	53° 18,274' N	-20.3	<b>DAK K5</b>	393676	5898079	1° 24,448' E	53° 13,282' N	-21.8
<b>DFE E1</b>	391477	5904129	1° 22,349' E	53° 16,517' N	-22.2	<b>DCE L1</b>	391174	5901522	1° 22,130' E	53° 15,107' N	-21.0
<b>DHE E2</b>	391619	5905431	1° 22,450' E	53° 17,220' N	-22.4	<b>DAF L2</b>	391122	5900148	1° 22,112' E	53° 14,366' N	-19.9
<b>DHD E3</b>	390886	5906025	1° 21,779' E	53° 17,531' N	-20.7	<b>DAG L3</b>	391760	5899631	1° 22,695' E	53° 14,095' N	-20.2
<b>DHC E4</b>	390153	5906619	1° 21,107' E	53° 17,843' N	-20.6	<b>DAH L4</b>	392399	5899114	1° 23,280' E	53° 13,824' N	-21.0
<b>DKB E5</b>	390229	5907976	1° 21,147' E	53° 18,575' N	-21.5	<b>DAJ L5</b>	393038	5898596	1° 23,865' E	53° 13,553' N	-20.6
<b>DKA E6</b>	389624	5908466	1° 20,592' E	53° 18,832' N	-21.1	<b>DFE T1</b>	392212	5903533	1° 23,022' E	53° 16,204' N	-21.5
<b>DHF F1</b>	392353	5904837	1° 23,123' E	53° 16,909' N	-21.7	<b>DFG T2</b>	392948	5902936	1° 23,696' E	53° 15,891' N	-22.1
<b>DKG F2</b>	393254	5905526	1° 23,919' E	53° 17,291' N	-23.2	<b>DDJ T3</b>	394241	5900466	1° 24,908' E	53° 14,575' N	-21.8
<b>DKF F3</b>	392649	5906016	1° 23,365' E	53° 17,548' N	-22.8	<b>DDK T4</b>	394974	5899873	1° 25,579' E	53° 14,264' N	-22.3
<b>DKE F4</b>	392044	5906506	1° 22,811' E	53° 17,805' N	-22.4	<b>DCK T5</b>	394840	5898551	1° 25,484' E	53° 13,550' N	-21.2
<b>DKD F5</b>	391439	5906996	1° 22,256' E	53° 18,062' N	-22.0	<b>DOW OSS</b>	391869	5902954	1° 22,726' E	53° 15,888' N	-21.1



### **Crew transfers vessels**

CTV's are operating 24hr per day onsite subject to weather.

### **GENERAL**

**ALL VESSELS ARE REQUESTED** to give all support vessels a wide berth.

**MARINERS ARE ADVISED** to navigate with caution and keep continued watch on VHF Ch. 16 when navigating the area.

Please direct any enquiries regarding this notice to Statoil Wind Control Centre: [statoilwindcontrol@equinor.com](mailto:statoilwindcontrol@equinor.com)

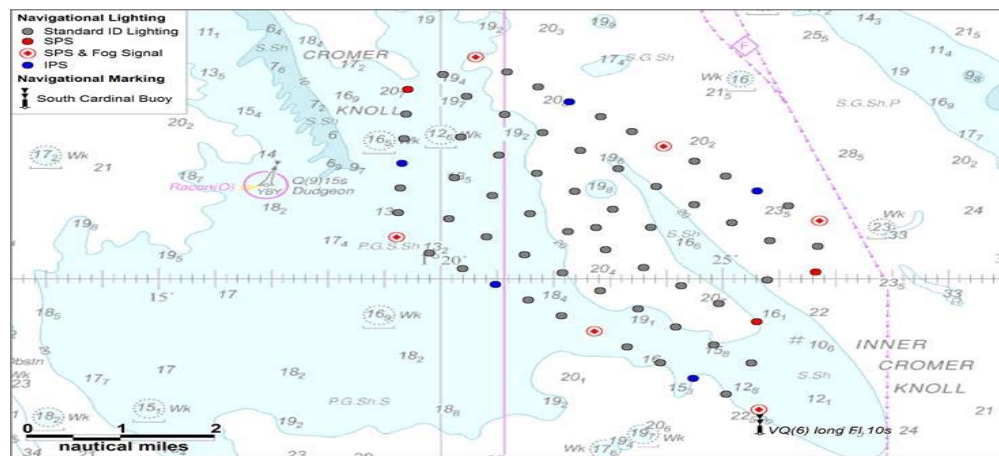
A copy of this notice can also be found at:

<http://dudgeonoffshorewind.co.uk/news/notice-to-mariners>

## SITE DETAILS

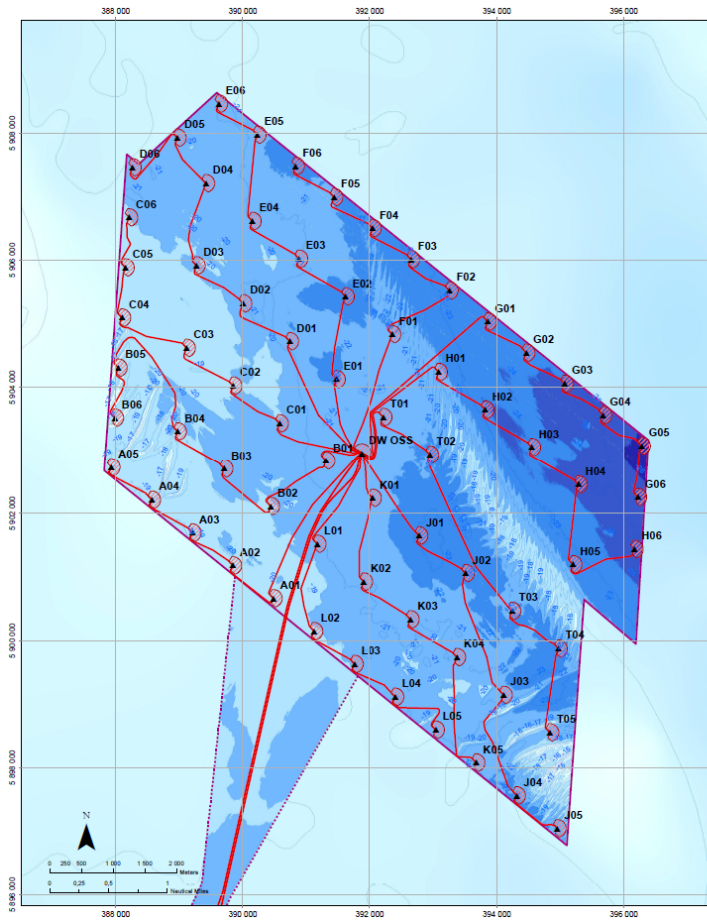
### Position of Navigation Buoys

Mark	Location	Name	Latitude	Longitude	Status	Flash Character	Code	Range
South Cardinal	SE Cardinal	S - DUDGEON	53° 12,470' N	1° 25,617' E	Permanent	VQ(6) long Fl.10s	516	5nm





# WTG ID and locations (coordinates)



**WTG and Substation Locations**

WTG	Easting	Northing	Lon DO	Lat DO	Depth	WTG	Easting	Northing	Lon DO	Lat DO	Depth
A01	390453.0	5903065.0	1.358777	53.243447	-10.5	F06	390284.0	5907456.0	1.361663	53.263308	-22.3
A02	389946.0	5901153.0	1.349042	53.246469	-10.6	G01	393859.0	5907650.0	1.407590	53.263028	-23.6
A03	389206.0	5901700.0	1.339289	53.252982	-10.0	G02	394465.0	5904546.0	1.417139	53.279626	-23.6
A04	388696.0	5902216.0	1.329549	53.257502	-10.2	G03	395070.0	5904056.0	1.426371	53.276343	-24.3
A05	391702.0	5902735.0	1.319702	53.262013	-10.8	G04	395675.0	5903566.0	1.435601	53.271090	-25.1
B01	391313.0	5902840.0	1.310468	53.263681	-21.5	G05	396281.0	5903077.0	1.444844	53.266795	-26.4
B02	390441.0	5902117.0	1.307949	53.259685	-10.9	G06	396225.0	5902259.0	1.444272	53.259423	-25.6
B03	389708.0	5902711.0	1.304640	53.262170	-20.5	H01	393098.0	5904243.0	1.396967	53.276627	-21.4
B04	388975.0	5903306.0	1.332988	53.267364	-19.3	H02	393820.0	5903949.0	1.407709	53.271438	-23.5
B05	388041.0	5904311.0	1.320916	53.270167	-18.2	H03	394533.0	5903955.0	1.418963	53.266246	-23.9
B06	387685.0	5903923.0	1.320354	53.269105	-18.2	H04	395237.0	5902461.0	1.430149	53.261054	-24.4
C01	390580.0	5903434.0	1.359279	53.268847	-20.1	H05	395204.0	5901199.0	1.429321	53.249698	-22.9
C02	389846.0	5904027.0	1.348102	53.274024	-10.8	H06	396170.0	5901440.0	1.443715	53.252053	-24.5
C03	389117.0	5904521.0	1.338937	53.279229	-10.4	T01	392212.0	5903533.0	1.383708	53.270071	-21.5
C04	388387.0	5905009.0	1.321479	53.283289	-10.4	T02	392948.0	5902936.0	1.394638	53.264556	-21.8
C05	388153.0	5905887.0	1.322040	53.290382	-10.4	T03	394241.0	5900496.0	1.415137	53.242920	-21.8
C06	388326.0	5906975.0	1.322922	53.297474	-20.0	T04	394974.0	5906973.0	1.426312	53.277737	-22.3
D01	390741.0	5904726.0	1.361247	53.280489	-21.7	T05	394840.0	5908551.0	1.424742	53.255332	-21.2
D02	390006.0	5905323.0	1.350022	53.285702	-20.9	J01	392777.0	5901953.0	1.392808	53.253293	-23.1
D03	389271.0	5905920.0	1.338783	53.290913	-20.1	J02	393599.0	5901060.0	1.403974	53.248112	-22.5
D04	388420.0	5906713.0	1.340577	53.302582	-20.2	J03	394107.0	5909145.0	1.413569	53.231024	-21.7
D05	388971.0	5907930.0	1.333591	53.308910	-20.3	J04	394315.0	5907962.0	1.417208	53.216841	-22.3
D06	388295.0	5907483.0	1.323166	53.304598	-20.3	J05	394954.0	5907945.0	1.426845	53.212322	-21.2
E01	391477.0	5904126.0	1.374246	53.275278	-22.6	K01	392045.0	5902046.0	1.381589	53.269473	-11.5
E02	391616.0	5905431.0	1.374170	53.287004	-22.4	K02	391907.0	5902028.0	1.380019	53.249602	-21.2
E03	390896.0	5906025.0	1.362975	53.292191	-20.7	K03	392940.0	5900394.0	1.391200	53.241413	-20.8
E04	390153.0	5906919.0	1.351778	53.297377	-20.6	K04	393373.0	5900730.0	1.402378	53.240314	-21.0
E05	390226.0	5907976.0	1.352448	53.306586	-21.5	K05	393876.0	5908979.0	1.407470	53.221359	-21.8
E06	389624.0	5908466.0	1.343321	53.313883	-21.1	L01	391174.0	5901522.0	1.368836	53.251789	-21.0
F01	392353.0	5904837.0	1.395377	53.281817	-21.7	L02	391122.0	5900446.0	1.369526	53.249433	-19.9
F02	393254.0	5905526.0	1.398654	53.288190	-23.2	L03	391760.0	5909931.0	1.378257	53.234918	-20.2
F03	392946.0	5906016.0	1.389417	53.292470	-22.8	L04	392399.0	5909114.0	1.388002	53.230402	-21.0
F04	392044.0	5906956.0	1.380177	53.298750	-22.4	L05	393035.0	5908569.0	1.397745	53.225677	-20.6
F05	391439.0	5908966.0	1.370936	53.301030	-22.0	Sub St	391870.0	5902955.0	1.378776	53.254908	-21.1
						(DW OGS)					

**Legend Main Map**

- ▲ WTG Layout Design Basis
- Evulsion Zone
- Sub Station
- Planned Interarray Cable Route
- Planned Export Cable Route
- Consented Field Outline
- Bathymetry (m rel. to LAT)
  - < -26
  - -24 -20
  - -22 -24
  - -20 -22
  - -18 -20
  - -16 -18
  - -14 -16
  - -12 -14

**Dudgeon Offshore Windpark**

Date	Description	Issue	Version	Status
04.03.2016	ISSUED FOR INFORMATION	EDOS	VERSION	ISSUED
03.02.2016	ISSUED FOR INFORMATION	EDOS	VERSION	ISSUED
02.11.2014	ISSUED FOR INFORMATION	EDOS	VERSION	ISSUED

**WTG and Substation Locations**

UK / North Norfolk

Scale: 1:50000

Project: C177-DOW-N-XE-0001-01

## VESSEL CONTACT DETAILS

### ESVAGT NJORD



**Call sign:** OWZN2

**Bridge Phone:** VSAT.TEL: +45 32 71 26 89; / GSM: +45 32 71 26 85

**E-mail:** njord@esvagtvesSEL.com