

NOTICE TO MARINERS

DUDGEON OFFSHORE WIND FARM CONSTRUCTION WORKS

NOTICE IS HEREBY GIVEN that construction activities are in progress at the Dudgeon Offshore Wind Farm.

Wind turbine generators will be installed in the first half of 2017. All construction work is planned to be completed in late 2017.

Service Operation Vessel

The ESVAGT NJORD will be performing preparation support for the operation of the wind farm and will be in regular transit between the Dudgeon site and Great Yarmouth.

Wind Turbine Generator Installation

The SEA CHALLENGER will perform installation of the wind turbine generators (WTG) from January 2017 until Q3-2017. WTG installation will be performed at the following locations in January:

ID	E ETRS89 UTM31N	N ETRS89 UTM31N	Lon	Lat	WD_LAT	Type
L01	391174	5901522	1,368835	53,251789	-20,967966	WTG
L02	391122	5900148	1,368526	53,239433	-19,874603	WTG
L03	391760	5899631	1,378257	53,234918	-20,209471	WTG
L04	392399	5899114	1,388002	53,230402	-21,007599	WTG
L05	393038	5898596	1,397745	53,225877	-20,640150	WTG

Accommodation Vessel

The VESTLAND CYGNUS will be on location from December 2016 to Q3-2017 as accommodation vessel for Turbine commissioning.

Commissioning activities

For the commissioning work there are several Crew Transfers Vessels operating in the wind farm area on a daily basis. This activity is ongoing and will continue until commissioning is completed in Q4 2017.

Guard Vessel

The RESOLUTE or the ADVENTURE will be present at the site to safe guard the wind farm area.

GENERAL

MARINERS ARE HEREBY INFORMED that a statutory construction Safety Zone (exclusion zone) is in place at the wind farm site. This safety zone is defined by:
A 500 metres radius around each wind turbine, offshore sub-station and their foundations whilst work is being performed as indicated by the presence of construction vessels; and
A 50 metres radius around each wind turbine, the offshore sub-station platform and associated foundation structures installed, complete or incomplete but waiting to be commissioned as part of the Dudgeon offshore wind farm where personnel are present on, or are being landed on or being taken from, the structures.

All vessels will exhibit appropriate lights and shapes prescribed by the International Regulations for Preventing Collisions at Sea.

ALL VESSELS ARE REQUESTED to give all construction and support vessels a wide berth.

MARINERS ARE ADVISED to navigate with caution and keep continued watch on VHF Ch. 16 when navigating the area.

A further notice to mariners will be issued when these works are completed, expected autumn 2017.

Please direct any enquiries regarding this notice to Statoil Wind Control Centre: statoilwindcontrol@statoil.com

A copy of this notice can also be found at:

<http://dudgeonoffshorewind.co.uk/news/notice-to-mariners>

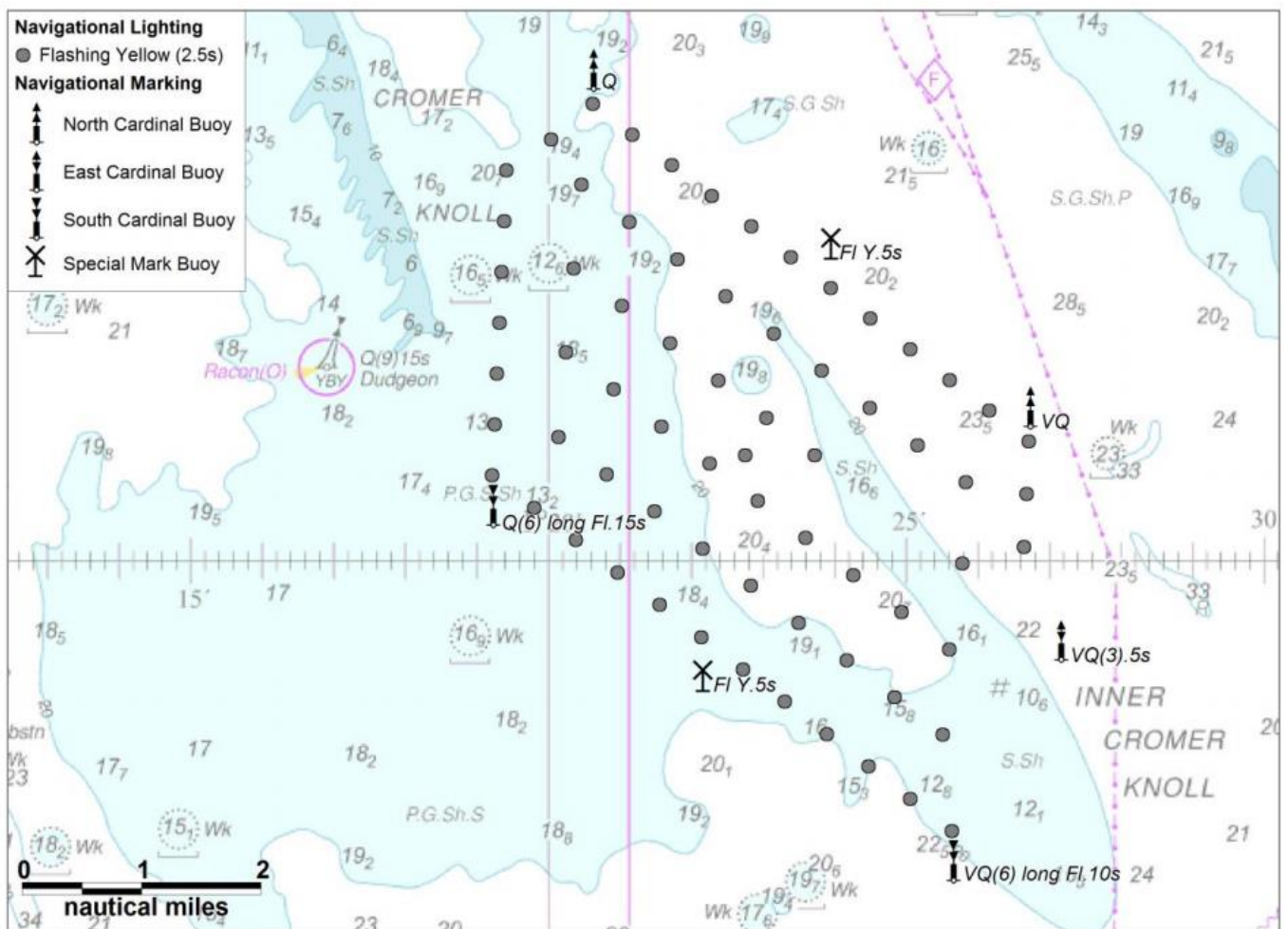
Fishing

The Dudgeon Wind Farm area is closed to fishing. The coordinates for the area of the closed area are included below.

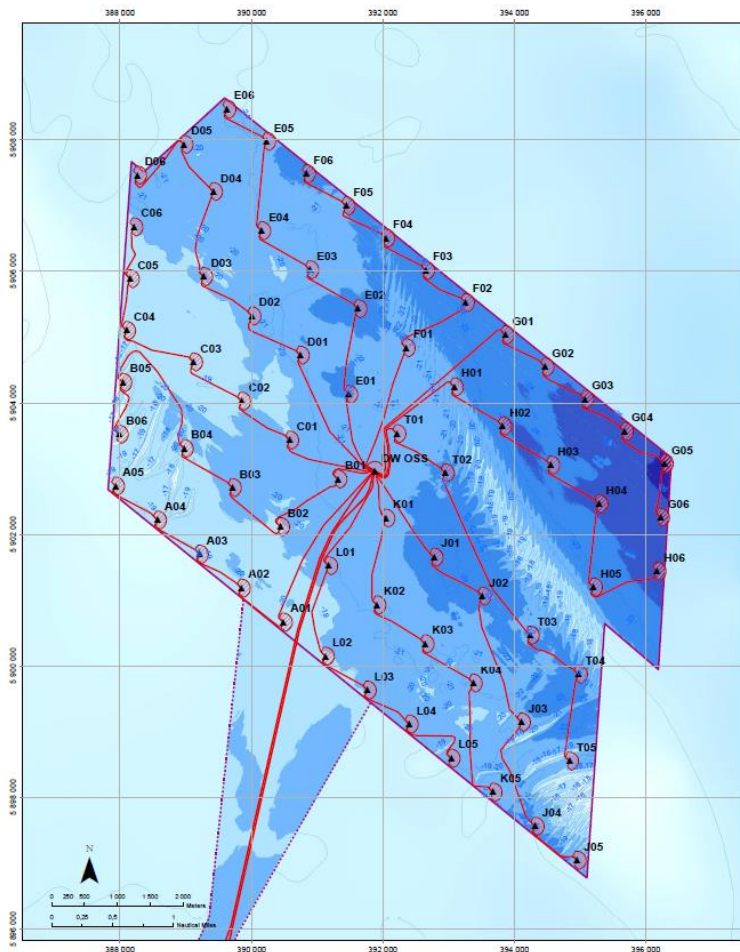
SITE DETAILS

Position of Navigation Buoys demarcating the Dudgeon Offshore Wind Farm site

Mark	Location	Name	Latitude	Longitude	Status	Flash Character	Code	Range
North Cardinal	NW Cardinal	N-DOW	53° 19,102' N	1° 20,592' E	Temporary	Q	601	5nm
Special Mark	Special Mark North	DOW - SM - N	53° 17,631' N	1° 23,919' E	Temporary	Fl.Y.5s	328	5nm
North Cardinal	North East Cardinal	NE - DOW	53° 16,277' N	1° 26,691' E	Temporary	VQ	501	5nm
East Cardinal	East Cardinal	E- DOW	53° 14,320' N	1° 27,123' E	Temporary	VQ(3).5s	508	5nm
South Cardinal	SE Cardinal	S - DUDGEON	53° 12,470' N	1° 25,617' E	Permanent	VQ(6) long Fl.10s	516	5nm
Special Mark	Special Mark South	DOW - SM - S	53° 14,012' N	1° 22,132' E	Temporary	Fl.Y.5s	328	5nm
South Cardinal	SW Cardinal	SW - DOW	53° 15,451' N	1° 19,188' E	Temporary	Q(6) long Fl.15s	631	5nm



WTG ID and locations (coordinates)




WTG and Substation Locations											
WTG	Easting	Northing	Lon DD	Lat DD	Depth LAT	WTG	Easting	Northing	Lon DD	Depth LAT	
A01	390483.0	5900965.0	1.355777	53.243947	-19.6	F05	390534.0	5907436.0	1.361853	53.205308	-22.3
A02	395845.0	5901183.0	1.345042	53.245469	-19.6	G01	393859.0	5905036.0	1.407890	53.283908	-23.6
A03	392026.0	5901700.0	1.339289	53.252982	-19.0	G02	394465.0	5904546.0	1.417139	53.279626	-23.6
A04	398968.0	5902218.0	1.329549	53.257502	-19.2	G03	395070.0	5904056.0	1.426371	53.275343	-24.3
A05	397502.0	5902735.0	1.319792	53.262013	-18.8	G04	395675.0	5903566.0	1.435601	53.271060	-25.1
B01	391313.0	5902840.0	1.370468	53.263661	-21.5	G05	396281.0	5903077.0	1.444844	53.266795	-26.4
B02	390441.0	5902117.0	1.375649	53.266985	-19.9	G06	396225.0	5902259.0	1.444272	53.259423	-25.6
B03	395703.0	5902711.0	1.345450	53.262170	-20.5	H01	393086.0	5904243.0	1.396867	53.276227	-21.4
B04	396975.0	5903306.0	1.335268	53.267364	-19.3	H02	393020.0	5903649.0	1.407769	53.271438	-23.5
B05	398041.0	5904311.0	1.320916	53.276197	-18.2	H03	394553.0	5903058.0	1.418953	53.266246	-23.9
B06	397985.0	5903323.0	1.320354	53.269105	-18.2	H04	395267.0	5902461.0	1.430149	53.261054	-24.4
C01	396900.0	5904340.0	1.355278	53.269847	-20.1	H05	396204.0	5901189.0	1.429321	53.249686	-22.5
C02	398848.0	5904027.0	1.348102	53.274024	-19.8	H06	396170.0	5901440.0	1.443715	53.252053	-24.5
C03	399117.0	5904462.0	1.336937	53.279209	-19.4	T01	392212.0	5903833.0	1.383706	53.270071	-21.5
C04	398007.0	5905050.0	1.321478	53.283299	-19.4	T02	392548.0	5902935.0	1.384038	53.264956	-22.1
C05	398153.0	5905887.0	1.322040	53.290382	-19.4	T03	394241.0	5900466.0	1.415137	53.242920	-21.8
C06	398209.0	5906675.0	1.322002	53.297474	-20.0	T04	394974.0	5900973.0	1.426312	53.237737	-22.3
D01	392714.0	5904726.0	1.361247	53.280459	-21.7	T05	394540.0	5900551.0	1.424742	53.235932	-21.2
D02	390006.0	5905323.0	1.350022	53.285702	-20.9	J01	392777.0	5901633.0	1.392806	53.253293	-23.1
D03	392971.0	5905900.0	1.338793	53.290913	-20.1	J02	393509.0	5901060.0	1.403874	53.248112	-22.5
D04	394920.0	5907213.0	1.340577	53.302582	-20.2	J03	394107.0	5900450.0	1.412668	53.231024	-21.7
D05	395971.0	5907930.0	1.333591	53.308190	-20.3	J04	394315.0	5900765.0	1.417205	53.216541	-22.3
D06	398285.0	5907463.0	1.333165	53.304566	-20.3	J05	394584.0	5900745.0	1.426845	53.212322	-21.2
E01	391477.0	5904189.0	1.372486	53.276276	-22.2	K01	392045.0	5902246.0	1.381639	53.258473	-21.8
E02	391619.0	5905451.0	1.374170	53.287044	-22.4	K02	391857.0	5902028.0	1.380019	53.246622	-21.4
E03	390886.0	5906025.0	1.362975	53.292191	-20.7	K03	392640.0	5900334.0	1.391200	53.241413	-20.5
E04	390153.0	5906619.0	1.351778	53.297377	-20.6	K04	393370.0	5900739.0	1.402378	53.236214	-21.0
E05	390203.0	5907976.0	1.350448	53.309566	-21.5	K05	393676.0	5900079.0	1.407470	53.221599	-21.8
E06	399534.0	5906466.0	1.343201	53.313963	-21.1	L01	391174.0	5901520.0	1.369535	53.251789	-21.0
F01	392363.0	5904837.0	1.385377	53.281817	-21.7	L02	391122.0	5900480.0	1.368526	53.239433	-19.9
F02	393254.0	5905526.0	1.399654	53.289190	-23.2	L03	391760.0	5900951.0	1.378267	53.234918	-20.2
F03	392649.0	5906116.0	1.395147	53.292470	-22.8	L04	392280.0	5900114.0	1.368002	53.230402	-21.0
F04	392044.0	5906506.0	1.380177	53.296750	-22.4	L05	393038.0	5900596.0	1.397745	53.228877	-20.6
F05	391439.0	5906996.0	1.370036	53.301030	-22.0	Sub St	391870.0	5902965.0	1.378776	53.264808	-21.1
						Sub St					

Legend Main Map

- ▲ WTG Layout Design Basis
- Exclusion Zone
- Sub Station
- Planned Interarray Cable Route
- Planned Export Cable Route
- Consented Field Outline

Bathymetry (m rel. to LAT)

- -26
- -24 -25
- -22 -24
- -20 -22
- -18 -20
- -16 -18
- -14 -16
- -12 -14



Dudgeon Offshore Windpark

NO	DATE	ISSUED FOR INFORMATION	EDUC	REVISION	REMARKS
04	21.03.2014	ISSUED FOR INFORMATION	EDUC	REVISION	REMARKS
03	05.02.2014	ISSUED FOR INFORMATION	EDUC	REVISION	REMARKS
02	27.11.2014	ISSUED FOR INFORMATION	EDUC	REVISION	REMARKS
01	04.07	FIELD NO. 001	ISSUED	REVISION	REMARKS

WTG and Substation Locations

UK / North Norfolk

Scale: 1:50000

Project: C177-DOW-N-XE-0001-01

Sheet: 04

KEY CONSTRUCTION VESSEL CONTACT DETAILS

ESVAGT NJORD



Call sign: OWZN2

Bridge Phone: VSAT.TEL: +45 32 71 26 89; / GSM: +45 32 71 26 85

E-mail: njord@esvagtvesel.com

SEA CHALLENGER



Call sign: OWLQ2

Bridge Phone: V-sat: +45 89 88 90 10

Master phone: vsat +45 89 88 90 11 / GSM +45 52 13 95 80

E-mail: seachallenger@a2sea.com / Master mast_sc@a2sea.com

VESTLAND CYGNUS



Callsign: C6BW7

Bridge Phone: VSAT.TEL: +4723677230; +4723677230 / GSM: +47 41 43 02 07

E-mail : captain.cygnus@vestlandoffshore.no ; bridge.cygnus@vestlandoffshore.no

ADVENTURE



Callsign: 2IFE4

Bridge Phone: V-sat 01947750717

E-mail: adventureGS@gmail.com / adventure.guard1@gmail.com

Resolute



Callsign: MLPD5

Bridge Phone: +44 284 179 8209

E-mail: resolute.guard1@gmail.com

Advance WY77



Callsign: MZNA6

Bridge Phone: Sat. Phone: 00870773231090/01947 240024

E-mail: adventureGS@gmail.com