

NOTICE TO MARINERS

DUDGEON OFFSHORE WIND FARM CONSTRUCTION WORKS

NOTICE IS HEREBY GIVEN that construction activities are in progress at the Dudgeon Offshore Wind Farm and Export Cable Corridor.

Foundation installation is completed and the offshore substation has been installed. Inter array cable burial and preparation for wind turbine generators is ongoing. Wind turbine generators will be installed in the first half of 2017. All construction work is planned to be completed in late 2017.

Service Operation Vessel

The ESVAGT NJORD will be performing preparation support for the operation of the wind farm and will be in regular transit between the Dudgeon site and Great Yarmouth.

Inter-Array Cable Burial

The GRAND CANYON will perform the burial of the Inter-Array Cables to connect the wind turbines to the offshore substation. This operation is ongoing and expected to be completed mid December 2016.

Accommodation Vessel

The SEA CHALLENGER will be used as accommodation at the Offshore Substation until mid-December 2016, and will then be used to install the wind turbine generators from January 2017 until Q3-2017.
The VESTLAND CYGNUS will be on location from December 2016 to Q3-2017 as accommodation vessel for Turbine commissioning.

Commissioning activities

For the commissioning work there are several Crew Transfers Vessels operating in the wind farm area on a daily basis. This activity is ongoing and will continue until commissioning is completed in Q4 2017.

Guard Vessel

The RESOLUTE has relieved GV ADVENTURE as a guard vessel to safe guard the wind farm area. The ADVENTURE is planned to be back on the field mid December 2016. During port calls, the ADVANCE will be used as back-up.

GENERAL

MARINERS ARE HEREBY INFORMED that a statutory construction Safety Zone (exclusion zone) is in place at the wind farm site. This safety zone is defined by:
A 500 metres radius around each wind turbine, offshore sub-station and their foundations whilst work is being performed as indicated by the presence of construction vessels; and
A 50 metres radius around each wind turbine, the offshore sub-station platform and associated foundation structures installed, complete or incomplete but waiting to be commissioned as part of the Dudgeon offshore wind farm where personnel are present on, or are being landed on or being taken from, the structures.

All vessels will exhibit appropriate lights and shapes prescribed by the International Regulations for Preventing Collisions at Sea.

ALL VESSELS ARE REQUESTED to give all construction and support vessels a wide berth.

MARINERS ARE ADVISED to navigate with caution and keep continued watch on VHF Ch. 16 when navigating the area.

A further notice to mariners will be issued when these works are completed, expected autumn 2017.

Please direct any enquiries regarding this notice to Statoil Wind Control Centre: statoilwindcontrol@statoil.com

A copy of this notice can also be found at:

<http://dudgeonoffshorewind.co.uk/news/notice-to-mariners>

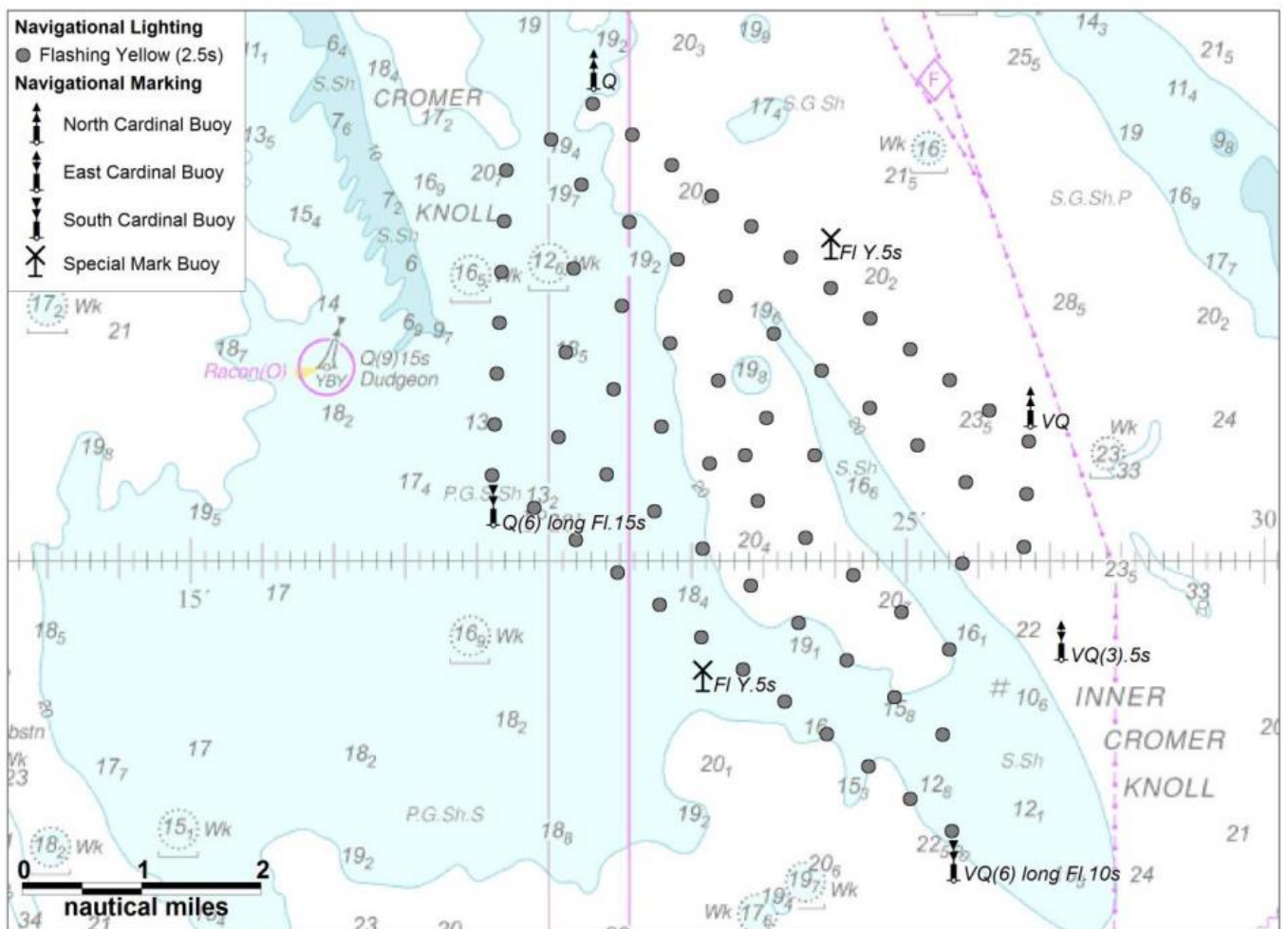
Fishing

The Dudgeon Wind Farm area is closed to fishing. The coordinates for the area of the closed area are included below.

SITE DETAILS

Position of Navigation Buoys demarcating the Dudgeon Offshore Wind Farm site

Mark	Location	Name	Latitude	Longitude	Status	Flash Character	Code	Range
North Cardinal	NW Cardinal	N-DOW	53° 19,102' N	1° 20,592' E	Temporary	Q	601	5nm
Special Mark	Special Mark North	DOW - SM - N	53° 17,631' N	1° 23,919' E	Temporary	Fl.Y.5s	328	5nm
North Cardinal	North East Cardinal	NE - DOW	53° 16,277' N	1° 26,691' E	Temporary	VQ	501	5nm
East Cardinal	East Cardinal	E- DOW	53° 14,320' N	1° 27,123' E	Temporary	VQ(3).5s	508	5nm
South Cardinal	SE Cardinal	S - DUDGEON	53° 12,470' N	1° 25,617' E	Permanent	VQ(6) long Fl.10s	516	5nm
Special Mark	Special Mark South	DOW - SM - S	53° 14,012' N	1° 22,132' E	Temporary	Fl.Y.5s	328	5nm
South Cardinal	SW Cardinal	SW - DOW	53° 15,451' N	1° 19,188' E	Temporary	Q(6) long Fl.15s	631	5nm



KEY CONSTRUCTION VESSEL CONTACT DETAILS

GRAND CANYON



Call sign: 3EVR8

Bridge phone: V-sat: +47 22 03 44 99

Captain: V-sat +47 21 03 45 00 / Immarsat +870 773205466

E-mail: master@grand-canyon.no / Gc1bridgesupt@helixesg.com

ESVAGT NJORD



Call sign: OWZN2

Bridge Phone: VSAT.TEL: +45 32 71 26 89; / GSM: +45 32 71 26 85

E-mail: njord@esvagtvesse.com

SEA CHALLENGER



Call sign: OWLQ2

Bridge Phone: V-sat: +45 89 88 90 10

Master phone: vsat +45 89 88 90 11 / GSM +45 52 13 95 80

E-mail: seachallenger@a2sea.com / Master mast_sc@a2sea.com

VESTLAND CYGNUS



Callsign: C6BW7

Bridge Phone: VSAT.TEL: +4723677230; +4723677230 / GSM: +47 41 43 02 07

E-mail : captain.cygnus@vestlandoffshore.no ; bridge.cygnus@vestlandoffshore.no

ADVENTURE



Callsign: 2IFE4

Bridge Phone: V-sat 01947750717

E-mail: adventureGS@gmail.com / adventure.guard1@gmail.com

Resolute



Callsign: MLPD5

Bridge Phone: +44 284 179 8209

E-mail: resolute.guard1@gmail.com

Advance WY77



Callsign: MZNA6

Bridge Phone: Sat. Phone: 00870773231090/01947 240024

E-mail: adventureGS@gmail.com