

# NOTICE TO MARINERS

## DUDGEON OFFSHORE WIND FARM CONSTRUCTION WORKS

**NOTICE IS HEREBY GIVEN** that construction activities are in progress at the Dudgeon Offshore Wind Farm.

Foundation installation is completed and the offshore substation has been installed. Wind turbine generators will be installed in the first half of 2017. All construction work is planned to be completed in late 2017.

### Service Operation Vessel

The ESVAGT NJORD will be performing preparation support for the operation of the wind farm and will be in regular transit between the Dudgeon site and Great Yarmouth.

### Wind Turbine Generator Installation

The SEA CHALLENGER will perform installation of the wind turbine generators from January 2017 until Q3-2017. WTG installation will be performed at the following locations in January:

ID	E ETRS89 UTM31N	N ETRS89 UTM31N	Lon	Lat	WD_LAT	Type
L01	391174	5901522	1,368835	53,251789	-20,967966	WTG
L02	391122	5900148	1,368526	53,239433	-19,874603	WTG
L03	391760	5899631	1,378257	53,234918	-20,209471	WTG
L04	392399	5899114	1,388002	53,230402	-21,007599	WTG
L05	393038	5898596	1,397745	53,225877	-20,640150	WTG

### Accommodation Vessel

The VESTLAND CYGNUS will be on location from December 2016 to Q3-2017 as accommodation vessel for Turbine commissioning.

## **Commissioning activities**

For the commissioning work there are several Crew Transfers Vessels operating in the wind farm area on a daily basis. This activity is ongoing and will continue until commissioning is completed in Q4 2017.

## **Guard Vessel**

The RESOLUTE has relieved GV ADVENTURE as a guard vessel to safe guard the wind farm area. The ADVENTURE is planned to be back on the field mid December 2016. During port calls, the ADVANCE will be used as back-up.

## GENERAL

**MARINERS ARE HEREBY INFORMED** that a statutory construction Safety Zone (exclusion zone) is in place at the wind farm site. This safety zone is defined by:  
A 500 metres radius around each wind turbine, offshore sub-station and their foundations whilst work is being performed as indicated by the presence of construction vessels; and  
A 50 metres radius around each wind turbine, the offshore sub-station platform and associated foundation structures installed, complete or incomplete but waiting to be commissioned as part of the Dudgeon offshore wind farm where personnel are present on, or are being landed on or being taken from, the structures.

**All vessels will exhibit appropriate lights and shapes prescribed by the International Regulations for Preventing Collisions at Sea.**

**ALL VESSELS ARE REQUESTED** to give all construction and support vessels a wide berth.

**MARINERS ARE ADVISED** to navigate with caution and keep continued watch on VHF Ch. 16 when navigating the area.

A further notice to mariners will be issued when these works are completed, expected autumn 2017.

Please direct any enquiries regarding this notice to Statoil Wind Control Centre: [statoilwindcontrol@statoil.com](mailto:statoilwindcontrol@statoil.com)

A copy of this notice can also be found at:

<http://dudgeonoffshorewind.co.uk/news/notice-to-mariners>

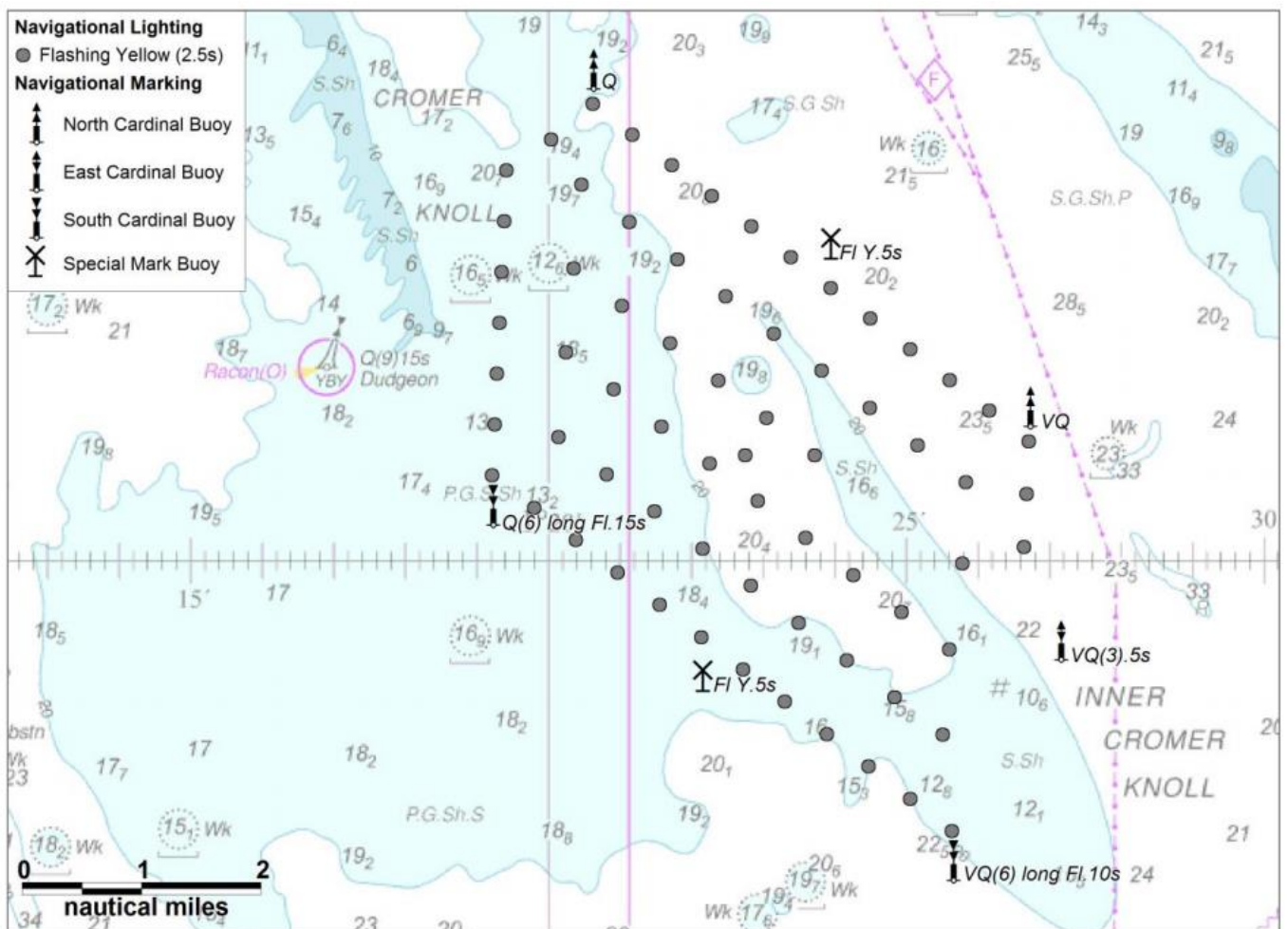
### Fishing

**The Dudgeon Wind Farm area is closed to fishing.** The coordinates for the area of the closed area are included below.

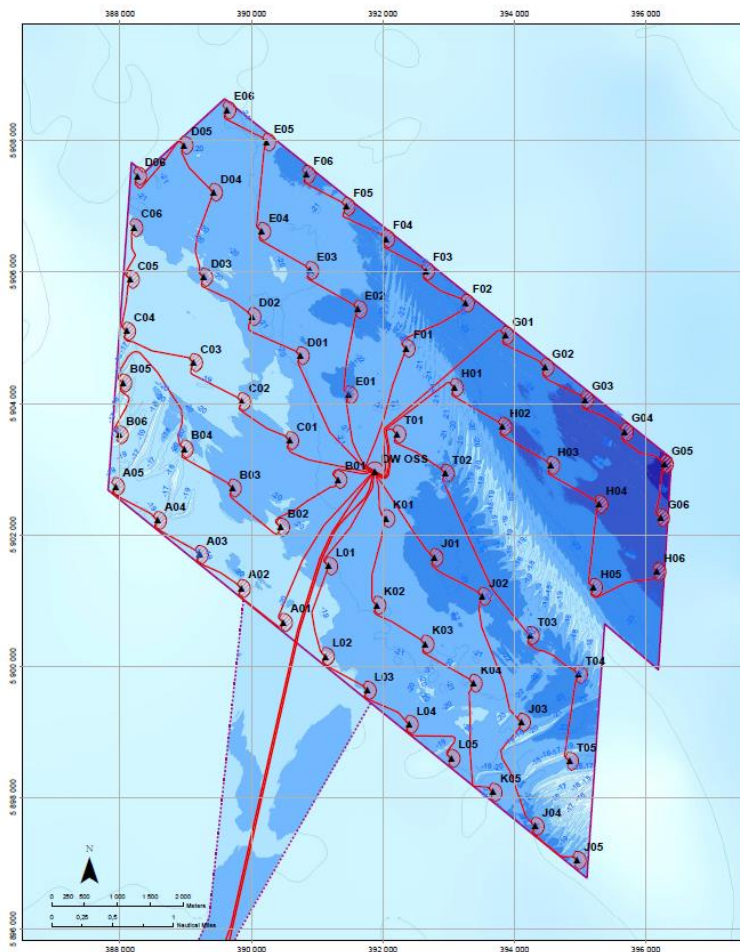
## SITE DETAILS

### Position of Navigation Buoys demarcating the Dudgeon Offshore Wind Farm site

Mark	Location	Name	Latitude	Longitude	Status	Flash Character	Code	Range
North Cardinal	NW Cardinal	<b>N-DOW</b>	53° 19,102' N	1° 20,592' E	Temporary	Q	601	5nm
Special Mark	Special Mark North	<b>DOW - SM - N</b>	53° 17,631' N	1° 23,919' E	Temporary	Fl.Y.5s	328	5nm
North Cardinal	North East Cardinal	<b>NE - DOW</b>	53° 16,277' N	1° 26,691' E	Temporary	VQ	501	5nm
East Cardinal	East Cardinal	<b>E- DOW</b>	53° 14,320' N	1° 27,123' E	Temporary	VQ(3).5s	508	5nm
South Cardinal	SE Cardinal	<b>S - DUDGEON</b>	53° 12,470' N	1° 25,617' E	<b>Permanent</b>	VQ(6) long Fl.10s	516	5nm
Special Mark	Special Mark South	<b>DOW - SM - S</b>	53° 14,012' N	1° 22,132' E	Temporary	Fl.Y.5s	328	5nm
South Cardinal	SW Cardinal	<b>SW - DOW</b>	53° 15,451' N	1° 19,188' E	Temporary	Q(6) long Fl.15s	631	5nm



# WTG ID and locations (coordinates)



**WTG and Substation Locations**

WTG	Easting	Northing	Lon DD	Lat DD	Depth LAT	WTG	Easting	Northing	Lon DD	Lat DD	Depth LAT
A01	392483.0	590286.0	1.38777	53.243947	-19.5	F06	390634.0	5907456.0	1.361653	53.265308	-22.3
A02	389645.0	5901183.0	1.349042	53.248460	-19.6	G01	393869.0	5905936.0	1.407890	53.283908	-23.6
A03	389206.0	5901700.0	1.339289	53.252982	-19.0	G02	394465.0	5904546.0	1.417139	53.279626	-23.6
A04	389568.0	5902218.0	1.329549	53.257502	-19.2	G03	395070.0	5904056.0	1.426371	53.275343	-24.3
A05	387920.0	5902735.0	1.319792	53.262013	-18.8	G04	395675.0	5903566.0	1.435601	53.271060	-25.1
B01	391313.0	5902840.0	1.370468	53.263661	-21.5	G05	396281.0	5903077.0	1.444844	53.266785	-26.4
B02	390441.0	5902117.0	1.376749	53.266985	-19.9	G06	396225.0	5902259.0	1.444272	53.259423	-26.6
B03	389703.0	5902711.0	1.348460	53.262170	-20.5	H01	393086.0	5904243.0	1.396867	53.276227	-21.4
B04	389975.0	5903306.0	1.335268	53.267364	-19.3	H02	393520.0	5903649.0	1.407769	53.271438	-23.5
B05	388041.0	5904311.0	1.320916	53.276197	-18.2	H03	394553.0	5903058.0	1.418953	53.266246	-23.9
B06	387985.0	5903823.0	1.320384	53.269105	-18.2	H04	395287.0	5902461.0	1.430149	53.261054	-24.4
C01	389060.0	5904340.0	1.359279	53.268947	-20.1	H05	395204.0	5901169.0	1.429321	53.249698	-22.1
C02	389848.0	5904027.0	1.348102	53.274024	-19.8	H06	396170.0	5901440.0	1.443715	53.252053	-24.5
C03	389117.0	5904621.0	1.338937	53.279209	-19.4	T01	392212.0	5903533.0	1.383706	53.270071	-21.5
C04	389007.0	5905059.0	1.321478	53.283269	-19.4	T02	392948.0	5902936.0	1.394938	53.264656	-22.1
C05	389153.0	5905587.0	1.322040	53.290382	-19.4	T03	394241.0	5900466.0	1.415137	53.242920	-21.8
C06	388209.0	5906675.0	1.322602	53.297474	-20.0	T04	394974.0	5909973.0	1.426312	53.237737	-22.3
D01	392741.0	5904726.0	1.361247	53.280459	-21.7	T05	394840.0	5909551.0	1.424742	53.235632	-21.2
D02	390006.0	5905323.0	1.350202	53.285702	-20.9	J01	392777.0	5901633.0	1.392806	53.263293	-23.1
D03	392971.0	5906920.0	1.338793	53.290913	-20.1	J02	393309.0	5901060.0	1.403874	53.248112	-22.5
D04	389420.0	5907213.0	1.340577	53.292562	-20.2	J03	394107.0	5909145.0	1.413569	53.231024	-21.6
D05	389971.0	5907530.0	1.333591	53.298191	-20.3	J04	394315.0	5909765.0	1.417205	53.216841	-22.3
D06	388285.0	5907483.0	1.333165	53.304566	-20.3	J05	394954.0	5907045.0	1.426945	53.212322	-21.7
E01	391477.0	5904190.0	1.372486	53.275276	-22.2	K01	392045.0	5902246.0	1.381639	53.258473	-21.5
E02	391619.0	5905451.0	1.374170	53.287004	-22.4	K02	391957.0	5902038.0	1.380019	53.246602	-21.2
E03	390886.0	5906025.0	1.362975	53.292191	-20.7	K03	392640.0	5900334.0	1.391200	53.241413	-20.8
E04	390153.0	5906619.0	1.351778	53.297377	-20.6	K04	393373.0	5909739.0	1.402378	53.236214	-21.0
E05	389229.0	5907976.0	1.342448	53.305586	-21.5	K05	393676.0	5909073.0	1.407470	53.221959	-21.8
E06	389645.0	5908466.0	1.343201	53.310963	-21.1	L01	391174.0	5901620.0	1.389636	53.251789	-21.0
F01	392363.0	5904837.0	1.385377	53.281817	-21.7	L02	391122.0	5900148.0	1.386826	53.239433	-19.9
F02	393264.0	5905526.0	1.396854	53.288190	-23.2	L03	391760.0	5909631.0	1.378257	53.234918	-20.2
F03	392649.0	5906161.0	1.389417	53.292470	-22.8	L04	392390.0	5909114.0	1.388002	53.230422	-21.8
F04	392044.0	5906506.0	1.380177	53.296750	-22.4	L05	393038.0	5909596.0	1.397745	53.225877	-20.6
F05	391439.0	5906996.0	1.370936	53.301030	-22.0	Sub St	391870.0	5902965.0	1.378776	53.264808	-21.1
						DOW OSS					

**Legend Main Map**

- ▲ WTG Layout Design Basis
- Exclusion Zone
- Sub Station
- Planned Interarray Cable Route
- Planned Export Cable Route
- Consented Field Outline

**Bathymetry (m rel. to LAT)**

- -26
- -24 -26
- -22 -24
- -20 -22
- -18 -20
- -16 -18
- -14 -16
- -12 -14

**Dudgeon Offshore Windpark**

This map features bathymetry from seabed survey: 8713504 DOWF (Sub and Seabed Mapping (2013))  
According to the subcontractor's error budget for this survey the accuracy is as follows:

The (horizontal) accuracy for navigation is +/- 20 cm  
(Horizontal determined by the dynamic position calibration for primary and secondary navigation system)

The (vertical) accuracy bathymetry:  
At 20m water depth the Total Vertical Uncertainty is +/- 27cm.  
At 50m water depth the Total Vertical Uncertainty is +/- 33 cm.

04	01.03.2014	ISSUED FOR INFORMATION	0005	SEWAS	JORWID
03	01.03.2014	ISSUED FOR INFORMATION	0005	SEWAS	JORWID
02	27.11.2014	ISSUED FOR INFORMATION	0005	SEWAS	JORWID
01	04.07	FIELD FOR ISSUE	0005	SEWAS	JORWID

**WTG and Substation Locations**

UK / North Norfolk

Scale: 1:50000

Project: C177-DOW-N-XE-0001-01

Sheet: 04



## KEY CONSTRUCTION VESSEL CONTACT DETAILS

### ESVAGT NJORD



**Call sign:** OWZN2

**Bridge Phone:** VSAT.TEL: +45 32 71 26 89; / GSM: +45 32 71 26 85

**E-mail:** njord@esvagtvesel.com

### SEA CHALLENGER



**Call sign:** OWLQ2

**Bridge Phone:** V-sat: +45 89 88 90 10

**Master phone:** vsat +45 89 88 90 11 / GSM +45 52 13 95 80

**E-mail:** seachallenger@a2sea.com / Master mast\_sc@a2sea.com

## VESTLAND CYGNUS



**Callsign:** C6BW7

**Bridge Phone:** VSAT.TEL: +4723677230; +4723677230 / GSM: +47 41 43 02 07

**E-mail :** [captain.cygnus@vestlandoffshore.no](mailto:captain.cygnus@vestlandoffshore.no) ; [bridge.cygnus@vestlandoffshore.no](mailto:bridge.cygnus@vestlandoffshore.no)

## ADVENTURE



**Callsign:** 2IFE4

**Bridge Phone:** V-sat 01947750717

**E-mail:** [adventureGS@gmail.com](mailto:adventureGS@gmail.com) / [adventure.guard1@gmail.com](mailto:adventure.guard1@gmail.com)



## Resolute



**Callsign:** MLPD5  
**Bridge Phone:** +44 284 179 8209  
**E-mail:** [resolute.guard1@gmail.com](mailto:resolute.guard1@gmail.com)

## Advance WY77



**Callsign:** MZNA6  
**Bridge Phone:** Sat. Phone: 00870773231090/01947 240024  
**E-mail:** [adventureGS@gmail.com](mailto:adventureGS@gmail.com)