

FINAL

NOTICE TO MARINERS

03.11.2017

DUDGEON OFFSHORE WIND FARM CONSTRUCTION WORKS

NOTICE IS HEREBY GIVEN that construction activities are now completed at the Dudgeon Offshore Wind Farm.

All installation work and commissioning of turbines completed.

The last construction vessel, Vestland Cygnus will demob this week, and the wind farm goes into an operation phase.

This is the final Notice to Mariners for the Wind farm construction. No further notices will be issued.

Service Operation Vessel

The ESVAGT NJORD is performing support for the operation of the wind farm and will be in regular transit between the Dudgeon site and Great Yarmouth.

Wind Turbine Generator locations

Location	Easting	Northing	Lon DD	Lat DD	Depth LAT [m]
Sub-Station	391 870	5 902 955	1,378776	53,264808	-21,1
L01	391 174	5 901 522	1,368835	53,251789	-21,0
L02	391 122	5 900 148	1,368526	53,239433	-19,9
L03	391 760	5 899 631	1,378257	53,234918	-20,2
L04	392 399	5 899 114	1,388002	53,230402	-21,0
L05	393 038	5 898 596	1,397745	53,225877	-20,6
K01	392 045	5 902 246	1,381639	53,258473	-21,5
K02	391 907	5 900 928	1,380019	53,246602	-21,2
K03	392 640	5 900 334	1,391200	53,241413	-20,8
K04	393 373	5 899 739	1,402378	53,236214	-21,0
K05	393 676	5 898 079	1,407470	53,221359	-21,8
T01	392 212	5 903 533	1,383706	53,270071	-21,5
T02	392 948	5 902 936	1,394938	53,264856	-22,1
T03	394 241	5 900 466	1,415137	53,242920	-21,8
T04	394 974	5 899 873	1,426312	53,237737	-22,3

Location	Easting	Northing	Lon DD	Lat DD	Depth LAT [m]
T05	394 840	5 898 551	1,424742	53,225832	-21,2
J01	392 777	5 901 653	1,392808	53,253293	-23,1
J02	393 509	5 901 060	1,403974	53,248112	-22,5
J03	394 107	5 899 145	1,413569	53,231024	-21,7
J04	394 315	5 897 562	1,417208	53,216841	-22,3
J05	394 954	5 897 045	1,426945	53,212322	-21,2
F01	392 353	5 904 837	1,385377	53,281817	-21,7
F02	393 254	5 905 526	1,398654	53,288190	-23,2
F03	392 649	5 906 016	1,389417	53,292470	-22,8
F04	392 044	5 906 506	1,380177	53,296750	-22,4
F05	391 439	5 906 996	1,370936	53,301030	-22,0
F06	390 834	5 907 486	1,361693	53,305308	-22,3
E01	391 477	5 904 129	1,372486	53,275276	-22,2
E02	391 619	5 905 431	1,374170	53,287004	-22,4
E03	390 886	5 906 025	1,362975	53,292191	-20,7
E04	390 153	5 906 619	1,351778	53,297377	-20,6
E05	390 229	5 907 976	1,352448	53,309586	-21,5
E06	389 624	5 908 466	1,343201	53,313863	-21,1
D01	390 741	5 904 726	1,361247	53,280489	-21,7
D02	390 006	5 905 323	1,350022	53,285702	-20,9
D03	389 271	5 905 920	1,338793	53,290913	-20,1
D04	389 420	5 907 213	1,340577	53,302562	-20,2
D05	388 971	5 907 930	1,333591	53,308910	-20,3
D06	388 265	5 907 463	1,323165	53,304566	-20,3
B01	391 313	5 902 840	1,370468	53,263661	-21,5
B02	390 441	5 902 117	1,357649	53,256985	-19,9
B03	389 708	5 902 711	1,346460	53,262170	-20,5
B04	388 975	5 903 306	1,335268	53,267364	-19,3
B05	388 041	5 904 311	1,320916	53,276197	-18,2
B06	387 985	5 903 523	1,320354	53,269105	-18,2
G02	394 465	5 904 546	1,417139	53,279626	-23,6
G03	395 070	5 904 056	1,426371	53,275343	-24,3
G04	395 675	5 903 566	1,435601	53,271060	-25,1
G05	396 281	5 903 077	1,444844	53,266785	-26,4
G06	396 225	5 902 259	1,444272	53,259423	-25,6
H01	393 086	5 904 243	1,396567	53,276627	-21,4
H02	393 820	5 903 649	1,407769	53,271438	-23,5
H03	394 553	5 903 055	1,418953	53,266246	-23,9
H04	395 287	5 902 461	1,430149	53,261054	-24,4
H05	395 204	5 901 199	1,429321	53,249698	-22,5
H06	396 170	5 901 440	1,443715	53,252053	-24,5
A01	390 483	5 900 665	1,358777	53,243947	-19,5
A02	389 845	5 901 183	1,349042	53,248469	-19,6
A03	389 206	5 901 700	1,339289	53,252982	-19,0

Location	Easting	Northing	Lon DD	Lat DD	Depth LAT [m]
A04	388 568	5 902 218	1,329549	53,257502	-19,2
A05	387 929	5 902 735	1,319792	53,262013	-18,8
C01	390 580	5 903 434	1,359278	53,268847	-20,1
C02	389 848	5 904 027	1,348102	53,274024	-19,8
C03	389 117	5 904 621	1,336937	53,279209	-19,4
C04	388 097	5 905 099	1,321478	53,283289	-19,4
C05	388 153	5 905 887	1,322040	53,290382	-19,4
C06	388 209	5 906 675	1,322602	53,297474	-20,0

COORDINATE REFERENCE SYSTEM:

Datum: WGS84

Projection: UTM Zone 31N

Crew transfers vessels

For the operation phase there are one to two Crew Transfers Vessels operating in the wind farm area on a daily basis.

GENERAL

ALL VESSELS ARE REQUESTED to give all support vessels a wide berth.

MARINERS ARE ADVISED to navigate with caution and keep continued watch on VHF Ch. 16 when navigating the area.

Please direct any enquiries regarding this notice to Statoil Wind Control Centre: statoilwindcontrol@statoil.com

A copy of this notice can also be found at:

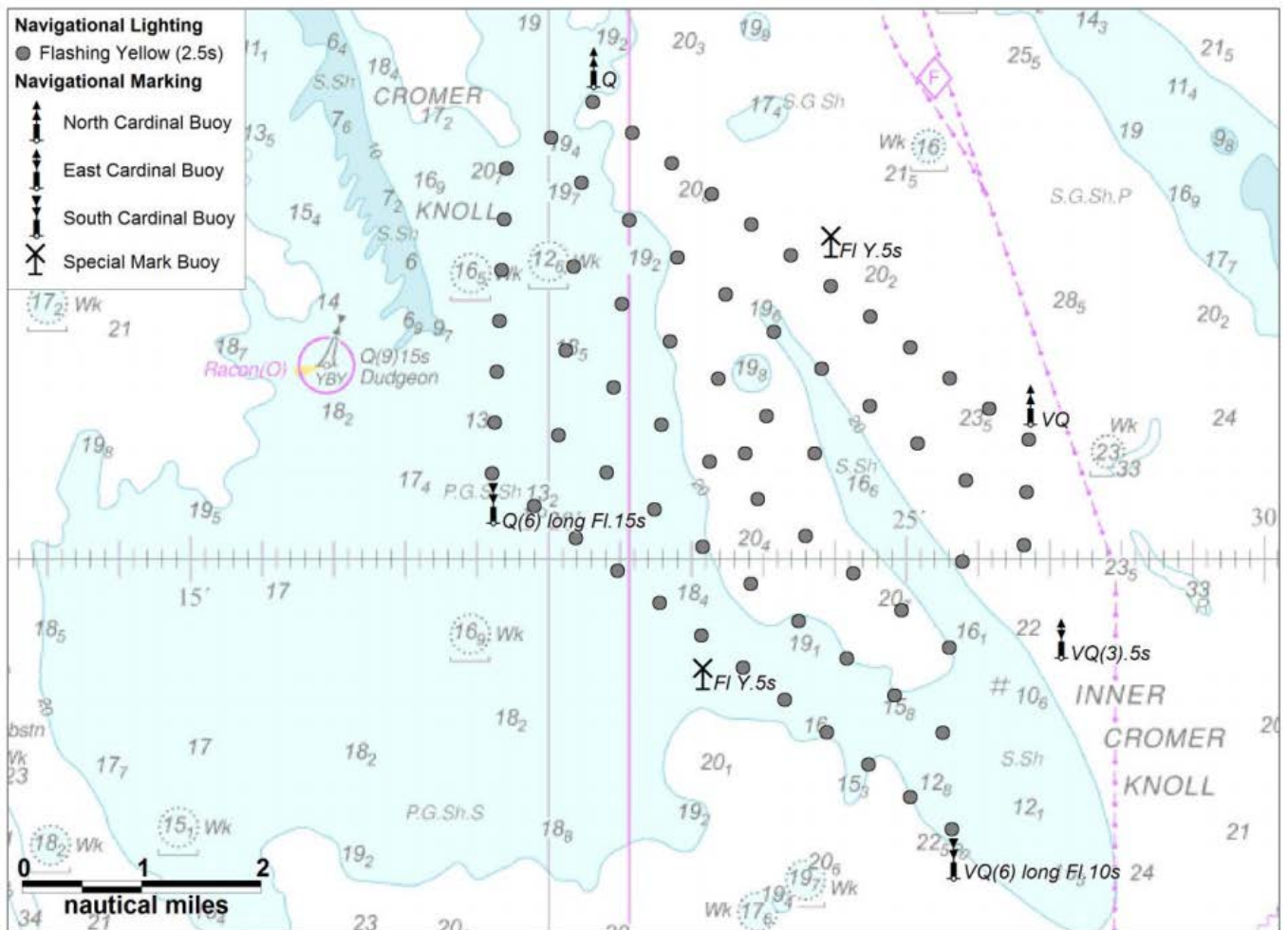
<http://dudgeonoffshorewind.co.uk/news/notice-to-mariners>

SITE DETAILS

Position of Navigation Buoys demarcating the Dudgeon Offshore Wind Farm site

Please note: All temporary bouys are scheduled to be recovered early December 2017. South Cardinal (S-DUDGEON) will remain permanently.

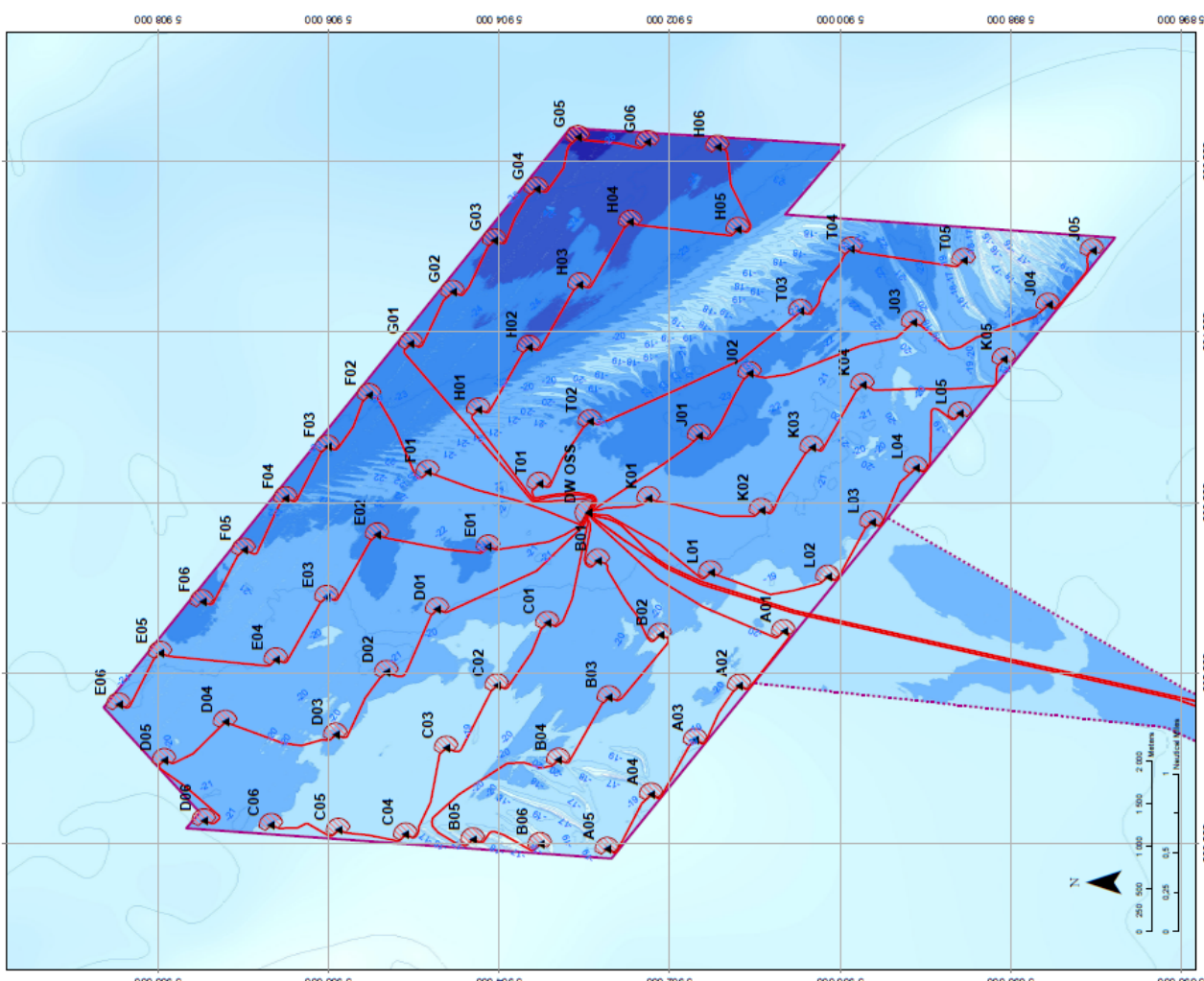
Mark	Location	Name	Latitude	Longitude	Status	Flash Character	Code	Range
North Cardinal	NW Cardinal	N-DOW	53° 19,102' N	1° 20,592' E	Temporary	Q	601	5nm
Special Mark	Special Mark North	DOW - SM - N	53° 17,631' N	1° 23,919' E	Temporary	Fl.Y.5s	328	5nm
North Cardinal	North East Cardinal	NE - DOW	53° 16,277' N	1° 26,691' E	Temporary	VQ	501	5nm
East Cardinal	East Cardinal	E- DOW	53° 14,320' N	1° 27,123' E	Temporary	VQ(3).5s	508	5nm
South Cardinal	SE Cardinal	S - DUDGEON	53° 12,470' N	1° 25,617' E	Permanent	VQ(6) long Fl.10s	516	5nm
Special Mark	Special Mark South	DOW - SM - S	53° 14,012' N	1° 22,132' E	Temporary	Fl.Y.5s	328	5nm
South Cardinal	SW Cardinal	SW - DOW	53° 15,451' N	1° 19,188' E	Temporary	Q(6) long Fl.15s	631	5nm



WTG ID and locations (coordinates)

WTG and Substation Locations

WTG ID	Easting	Northing	Lon DD	Lat DD	Depth LAT	WTG	Easting	Northing	Lon DD	Lat DD	Depth LAT
A01	390483.0	500066.0	1.38777	53.24347	-18.5	F06	390483.0	5007495.0	1.39183	53.30508	-22.3
A02	388245.0	5011153.0	1.34842	53.24869	-18.6	G01	388245.0	5003050.0	1.40780	53.25308	-23.6
A03	388206.0	5007000.0	1.33628	53.25282	-18.2	G02	394465.0	5006560.0	1.41739	53.27928	-23.6
A04	388268.0	5002718.0	1.32848	53.25702	-18.2	G03	388207.0	5004650.0	1.42637	53.27543	-24.3
A05	387828.0	5002762.0	1.31872	53.25203	-18.6	G04	388275.0	5003550.0	1.43591	53.27100	-25.1
A06	390131.0	5003470.0	1.32786	53.25685	-21.5	G05	388251.0	5002257.0	1.44477	53.25683	-20.4
A07	390709.0	5007110.0	1.34648	53.26170	-19.6	H01	390280.0	5004340.0	1.39657	53.27693	-21.0
A08	388275.0	5003398.0	1.33688	53.25784	-19.3	H02	393200.0	5003940.0	1.40778	53.27148	-23.9
A09	388941.0	5004311.0	1.32008	53.27810	-18.2	H03	394553.0	5003950.0	1.41883	53.28248	-23.0
A10	387585.0	5003623.0	1.32034	53.26910	-18.2	H04	395287.0	5004610.0	1.43049	53.28104	-24.4
B01	390580.0	5004944.0	1.35028	53.28910	-20.1	H05	395204.0	5001180.0	1.42831	53.24988	-22.5
B02	388948.0	5004027.0	1.34810	53.27404	-18.8	H06	398170.0	5001440.0	1.44375	53.25063	-24.5
B03	388153.0	5005060.0	1.32240	53.29382	-18.4	T01	392212.0	5003630.0	1.39370	53.27007	-21.5
B04	388007.0	5005877.0	1.32202	53.29032	-18.4	T02	392448.0	5003930.0	1.39438	53.24669	-22.1
B05	388200.0	5006776.0	1.32147	53.29474	-20.0	T03	394241.0	5004650.0	1.41637	53.24202	-21.8
B06	390741.0	5004726.0	1.34124	53.29048	-21.7	T04	394674.0	5006870.0	1.42832	53.23737	-21.2
C01	390060.0	5005223.0	1.35022	53.28570	-20.9	T05	394940.0	5006551.0	1.42472	53.22532	-23.1
C02	390271.0	5005020.0	1.33873	53.29091	-20.1	J01	392777.0	5001653.0	1.36288	53.25393	-23.1
C03	389420.0	5007133.0	1.34057	53.30262	-20.2	J02	393509.0	5001060.0	1.40397	53.24812	-22.5
C04	388265.0	5007930.0	1.33359	53.30891	-20.3	J03	394107.0	5001445.0	1.41359	53.23104	-21.7
C05	388265.0	5007463.0	1.32316	53.30466	-20.3	J04	394315.0	5007552.0	1.41728	53.21694	-22.3
C06	391477.0	5004128.0	1.32488	53.27576	-22.2	J05	394654.0	5007045.0	1.42845	53.21222	-21.2
D01	391610.0	5005431.0	1.32470	53.28704	-22.4	K01	392045.0	5002460.0	1.38168	53.25947	-21.5
D02	390880.0	5006025.0	1.32975	53.29219	-20.7	K02	391807.0	5000920.0	1.38018	53.24602	-21.2
D03	390153.0	5006916.0	1.32178	53.29737	-20.6	K03	392940.0	5000930.0	1.38130	53.24143	-20.8
D04	388250.0	5007916.0	1.32448	53.30686	-21.5	K04	393373.0	5000730.0	1.40278	53.22674	-21.0
D05	388250.0	5008460.0	1.34301	53.31383	-21.1	L01	391174.0	5001520.0	1.38836	53.25178	-21.0
D06	392353.0	5006537.0	1.36337	53.28197	-23.2	L02	391122.0	5001440.0	1.38836	53.25433	-18.9
E01	392524.0	5005020.0	1.38807	53.28190	-23.6	L03	391700.0	5001520.0	1.38837	53.24918	-20.2
E02	392524.0	5005020.0	1.38807	53.28190	-23.6	L04	391700.0	5001520.0	1.38837	53.24918	-20.2
E03	392524.0	5005020.0	1.38807	53.28190	-23.6	L05	393200.0	5004650.0	1.39735	53.22577	-21.0
E04	392524.0	5005020.0	1.38807	53.28190	-23.6	L06	393200.0	5004650.0	1.39735	53.22577	-21.0
E05	392524.0	5005020.0	1.38807	53.28190	-23.6	Sub St.	391870.0	5002650.0	1.37878	53.25408	-21.1
E06	391438.0	5006988.0	1.32068	53.30103	-22.0	(OW OS)					



Dudgeon Offshore Windpark

STATIONARY REFERENCE SYSTEM
 Datum: ED50
 Projection: UTM Zone 31N
 Units: Meter

WTG and Substation Locations

UK / North Norfolk

Scale: 1:50000

Map ID: C177-DOW-N-XE-0001-01

Scale: 1:50000

Map ID: C177-DOW-N-XE-0001-01

Scale: 1:50000

Map ID: C177-DOW-N-XE-0001-01

This map features bathymetry from seabed survey: ST13504 DOWF Sub and Seabed Mapping (2013) according to the subcontractor's error budget for this survey the accuracy is as follows:

The (horizontal) accuracy for navigation is +/- 20 cm (horizontal determined by the dynamic position calibration for primary and secondary navigation system)

The (vertical) accuracy bathymetry:
 At 20m water depth the Total Vertical Uncertainty is +/- 27cm.
 At 50m water depth the Total Vertical Uncertainty is +/- 33 cm.

VESSEL CONTACT DETAILS

ESVAGT NJORD



Call sign: OWZN2

Bridge Phone: VSAT.TEL: +45 32 71 26 89; / GSM: +45 32 71 26 85

E-mail: njord@esvagtvesel.com