



# NOTICE TO MARINERS

04.12.2018

## DUDGEON OFFSHORE WIND FARM Failure of Navigations Lights, Lights, Fog signal and SAR lights

**NOTICE IS HEREBY GIVEN** that we have had a power failure on B String, C String, F String, G String and H String with failure of WTG lights and SAR lights on the below turbines or WTG's. Will be reinstalled asap.

Name	Easting	Northing	Lon	Lat	Type	Failure of	Failure of	Failure of
B01	391313	5902840	1,370,468	53,263,661	WTG	Inner SAR light 200cd		
B02	390441	5902117	1,357,649	53,256,985	WTG	Inner SAR light 200cd		
B03	389708	5902711	1,346,460	53,262,170	WTG	Inner SAR light 200cd		
B04	388975	5903306	1,335,268	53,267,364	WTG	Inner SAR light 200cd		
B05	388041	5904311	1,320,916	53,276,197	WTG	Aviation light 2000cd Perimeter		
B06	387985	5903523	1,320,354	53,269,105	WTG	Aviation light 2000cd Perimeter		
C02	389848	5904027	1,348,102	53,274,024	WTG	Inner SAR light 200cd		
C03	389117	5904621	1,336,937	53,279,209	WTG	Inner SAR light 200cd		
C04	388097	5905099	1,321,478	53,283,289	WTG	Aviation light 2000cd Perimeter	Navigation Light	
C05	388153	5905887	1,322,040	53,290,382	WTG	Aviation light 2000cd Perimeter		
C06	388209	5906675	1,322,602	53,297,474	WTG	Aviation light 2000cd Perimeter		
F04	392044	5906506	1,380,177	53,296,750	WTG	Aviation light 2000cd Perimeter		
F05	391439	5906996	1,370,936	53,301,030	WTG	Aviation light 2000cd Perimeter	Navigation Light	
F06	390834	5907486	1,361,693	53,305,308	WTG	Aviation light 2000cd Perimeter		



Name	Easting	Northing	Lon	Lat	Type	Failure of	Failure of	Failure of
G02	394465	5904546	1,417,139	53,279,626	WTG	Aviation light 2000cd Perimeter		
G03	395070	5904056	1,426,371	53,275,343	WTG	Aviation light 2000cd Perimeter	Navigation Light	
G04	395675	5903566	1,435,601	53,271,060	WTG	Aviation light 2000cd Perimeter		
G05	396281	5903077	1,444,844	53,266,785	WTG	Aviation light 2000cd Perimeter	Navigation Light	Fog horn
G06	396225	5902259	1,444,272	53,259,423	WTG	Aviation light 2000cd Perimeter		
H01	393086	5904243	1,396,567	53,276,627	WTG	Inner SAR light 200cd		
H02	393820	5903649	1,407,769	53,271,438	WTG	Inner SAR light 200cd		
H03	394553	5903055	1,418,953	53,266,246	WTG	Inner SAR light 200cd		
H04	395287	5902461	1,430,149	53,261,054	WTG	Inner SAR light 200cd		
H05	395204	5901199	1,429,321	53,249,698	WTG	Aviation light 2000cd Perimeter		
H06	396170	5901440	1,443,715	53,252,053	WTG	Aviation light 2000cd Perimeter	Navigation Light	

**All vessels in the Dudgeon Wind farm location are advised to give a wide berth to the wind farm and proceed with caution.**

We will try to reinstall over the coming 14 days.

The Dudgeon wind farm is now operating and there will be various vessels within the wind farm including the SOV Njord and Dalby Ouse CTV.

**Service Operation Vessel**

The ESVAGT NJORD is performing support for the operation of the wind farm and will be in regular transit between the Dudgeon site and Great Yarmouth.

**Crew transfer vessels**



The CTV DALBY OUSE is performing support for the operation of the wind farm and will be in regular transit between the Dudgeon site and Great Yarmouth.

**Wind Turbine Generator**

WTG	Easti ng	Northi ng	Lon DD MM, m	Lat DD MM,m	Depth LAT	WTG	Easti ng	Northi ng	Lon DD MM,m	Lat DD MM,m	Dept h LAT
<b>DAE A1</b>	3904 83	59006 65	1° 21,527' E	53° 14,637' N	-19.5	<b>DKC F6</b>	3908 34	59074 86	1° 21,702' E	53° 18,318' N	-22.3
<b>DAD A2</b>	3898 45	59011 83	1° 20,942' E	53° 14,908' N	-19.6	<b>DKH G1</b>	3938 59	59050 36	1° 24,473' E	53° 17,034' N	-23.6
<b>DAC A3</b>	3892 06	59017 00	1° 20,357' E	53° 15,179' N	-19.0	<b>DKJ G2</b>	3944 65	59045 46	1° 25,028' E	53° 16,778' N	-23.6
<b>DAB A4</b>	3885 68	59022 18	1° 19,773' E	53° 15,450' N	-19.2	<b>DKK G3</b>	3950 70	59040 56	1° 25,582' E	53° 16,521' N	-24.3
<b>DAA A5</b>	3879 29	59027 35	1° 19,188' E	53° 15,721' N	-18.8	<b>DKL G4</b>	3956 75	59035 66	1° 26,136' E	53° 16,264' N	-25.1
<b>DDE B1</b>	3913 13	59028 40	1° 22,228' E	53° 15,820' N	-21.5	<b>DKM G5</b>	3962 81	59030 77	1° 26,691' E	53° 16,007' N	-26.4
<b>DCD B2</b>	3904 41	59021 17	1° 21,459' E	53° 15,419' N	-19.9	<b>DJM G6</b>	3962 25	59022 59	1° 26,656' E	53° 15,565' N	-25.6
<b>DCC B3</b>	3897 08	59027 11	1° 20,788' E	53° 15,730' N	-20.5	<b>DHG H1</b>	3930 86	59042 43	1° 23,794' E	53° 16,598' N	-21.4
<b>DCB B4</b>	3889 75	59033 06	1° 20,116' E	53° 16,042' N	-19.3	<b>DHH H2</b>	3938 20	59036 49	1° 24,466' E	53° 16,286' N	-23.5
<b>DCA B5</b>	3880 41	59043 11	1° 19,255' E	53° 16,572' N	-18.2	<b>DHJ H3</b>	3945 53	59030 55	1° 25,137' E	53° 15,975' N	-23.9
<b>DBA B6</b>	3879 85	59035 23	1° 19,221' E	53° 16,146' N	-18.2	<b>DHK H4</b>	3952 87	59024 61	1° 25,809' E	53° 15,663' N	-24.4
<b>DDD C1</b>	3905 80	59034 34	1° 21,557' E	53° 16,131' N	-20.1	<b>DFK H5</b>	3952 04	59011 99	1° 25,759' E	53° 14,982' N	-22.5



			E						E		
			1°						1°		
<b>DDC C2</b>	3898 48	59040 27	20,886' E	53° 16,441' N	-19.8	<b>DHM H6</b>	3961 70	59014 40	26,623' E	53° 15,123' N	-24.5
			1°						1°		
<b>DDB C3</b>	3891 17	59046 21	20,216' E	53° 16,753' N	-19.4	<b>DDG J1</b>	3927 77	59016 53	23,568' E	53° 15,198' N	-23.1
			1°						1°		
<b>DDA C4</b>	3880 97	59050 99	19,289' E	53° 16,997' N	-19.4	<b>DDH J2</b>	3935 09	59010 60	24,238' E	53° 14,887' N	-22.5
			1°						1°		
<b>DEA C5</b>	3881 53	59058 87	19,322' E	53° 17,423' N	-19.4	<b>DCJ J3</b>	3941 07	58991 45	24,814' E	53° 13,861' N	-21.7
			1°						1°		
<b>DFA C6</b>	3882 09	59066 75	19,356' E	53° 17,848' N	-20.0	<b>DAL J4</b>	3943 15	58975 62	25,032' E	53° 13,010' N	-22.3
			1°						1°		
<b>DFD D1</b>	3907 41	59047 26	21,675' E	53° 16,829' N	-21.7	<b>DAM J5</b>	3949 54	58970 45	25,617' E	53° 12,739' N	-21.2
			1°						1°		
<b>DFC D2</b>	3900 06	59053 23	21,001' E	53° 17,142' N	-20.9	<b>DDF K1</b>	3920 45	59022 46	22,898' E	53° 15,508' N	-21.5
			1°						1°		
<b>DFB D3</b>	3892 71	59059 20	20,328' E	53° 17,455' N	-20.1	<b>DCF K2</b>	3919 07	59009 28	22,801' E	53° 14,796' N	-21.2
			1°						1°		
<b>DHB D4</b>	3894 20	59072 13	20,435' E	53° 18,154' N	-20.2	<b>DCG K3</b>	3926 40	59003 34	23,472' E	53° 14,485' N	-20.8
			1°						1°		
<b>DHA D5</b>	3889 71	59079 30	20,015' E	53° 18,535' N	-20.3	<b>DCH K4</b>	3933 73	58997 39	24,143' E	53° 14,173' N	-21.0
			1°						1°		
<b>DGA D6</b>	3882 65	59074 63	19,390' E	53° 18,274' N	-20.3	<b>DAK K5</b>	3936 76	58980 79	24,448' E	53° 13,282' N	-21.8
			1°						1°		
<b>DFE E1</b>	3914 77	59041 29	22,349' E	53° 16,517' N	-22.2	<b>DCE L1</b>	3911 74	59015 22	22,130' E	53° 15,107' N	-21.0
			1°						1°		
<b>DHE E2</b>	3916 19	59054 31	22,450' E	53° 17,220' N	-22.4	<b>DAF L2</b>	3911 22	59001 48	22,112' E	53° 14,366' N	-19.9
			1°						1°		
<b>DHD E3</b>	3908 86	59060 25	21,779' E	53° 17,531' N	-20.7	<b>DAG L3</b>	3917 60	58996 31	22,695' E	53° 14,095' N	-20.2
			1°						1°		
<b>DHC E4</b>	3901 53	59066 19	21,107' E	53° 17,843' N	-20.6	<b>DAH L4</b>	3923 99	58991 14	23,280' E	53° 13,824' N	-21.0



			E						E		
			1°						1°		
	3902	59079	21,147'	53°			3930	58985	23,865'	53°	
<b>DKB E5</b>	29	76	E	18,575' N	-21.5	<b>DAJ L5</b>	38	96	E	13,553' N	-20.6
			1°						1°		
	3896	59084	20,592'	53°			3922	59035	23,022'	53°	
<b>DKA E6</b>	24	66	E	18,832' N	-21.1	<b>DFE T1</b>	12	33	E	16,204' N	-21.5
			1°						1°		
	3923	59048	23,123'	53°			3929	59029	23,696'	53°	
<b>DHF F1</b>	53	37	E	16,909' N	-21.7	<b>DFG T2</b>	48	36	E	15,891' N	-22.1
			1°						1°		
	3932	59055	23,919'	53°			3942	59004	24,908'	53°	
<b>DKG F2</b>	54	26	E	17,291' N	-23.2	<b>DDJ T3</b>	41	66	E	14,575' N	-21.8
			1°						1°		
	3926	59060	23,365'	53°			3949	58998	25,579'	53°	
<b>DKF F3</b>	49	16	E	17,548' N	-22.8	<b>DDK T4</b>	74	73	E	14,264' N	-22.3
			1°						1°		
	3920	59065	22,811'	53°			3948	58985	25,484'	53°	
<b>DKE F4</b>	44	06	E	17,805' N	-22.4	<b>DCK T5</b>	40	51	E	13,550' N	-21.2
			1°						1°		
	3914	59069	22,256'	53°		<b>DOW</b>	3918	59029	22,726'	53°	
<b>DKD F5</b>	39	96	E	18,062' N	-22.0	<b>OSS</b>	69	54	E	15,888' N	-21.1

## Crew transfers vessels

CTV's are operating 24hr per day onsite subject to weather.

## GENERAL

**ALL VESSELS ARE REQUESTED** to give all support vessels a wide berth.

**MARINERS ARE ADVISED** to navigate with caution and keep continued watch on VHF Ch. 16 when navigating the area.

Please direct any enquiries regarding this notice to Statoil Wind Control Centre: [statoilwindcontrol@equinor.com](mailto:statoilwindcontrol@equinor.com)



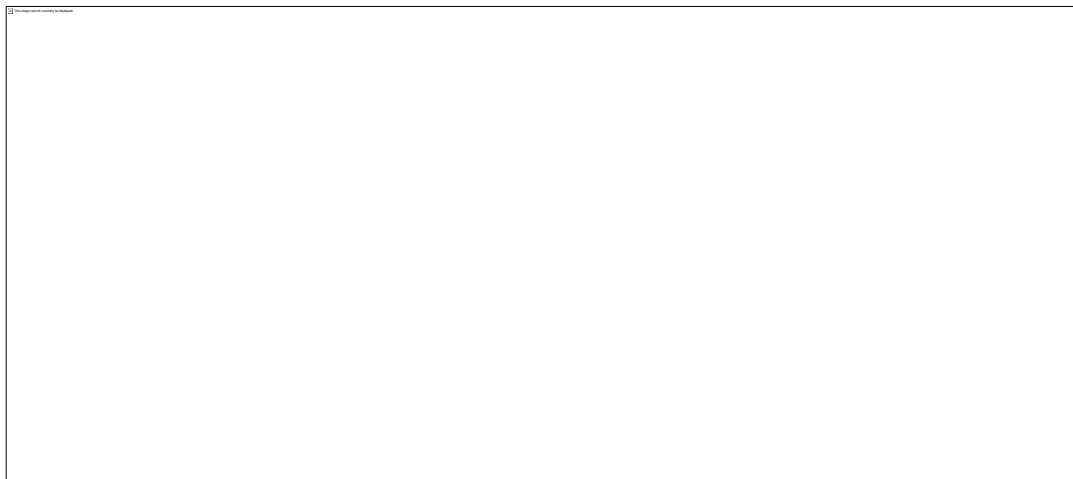
A copy of this notice can also be found at:

<http://dudgeonoffshorewind.co.uk/news/notice-to-mariners>

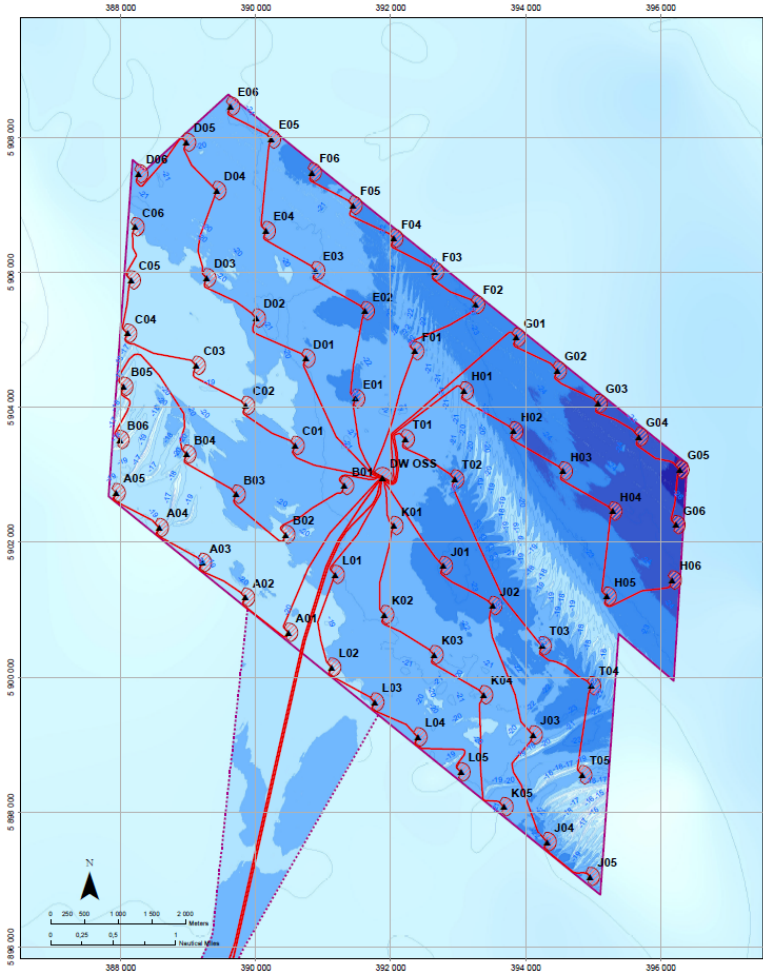
## SITE DETAILS

### Position of Navigation Buoys

Mark	Location	Name	Latitude	Longitude	Status	Flash Character	Code	Range
South Cardinal	SE Cardinal	S - DUDGEON	53° 12,470' N	1° 25,617' E	Permanent	VQ(6) long Fl.10s	516	5nm



### WTG ID and locations (coordinates)



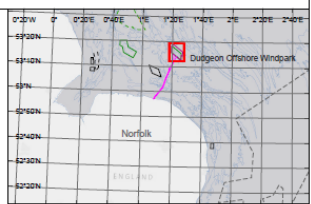
### WTG and Substation Locations

WTG	Easting	Northing	Lon DD	Lat DD	Depth	WTG	Easting	Northing	Lon DD	Lat DD	Depth
A01	390483.0	5900995.0	1.368777	53.243947	-19.5	F06	390534.0	5907486.0	1.361693	53.305308	-22.3
A02	389945.0	5901183.0	1.349042	53.248489	-19.6	G01	393359.0	5905326.0	1.407990	53.283006	-23.6
A03	388206.0	5901700.0	1.339289	53.252682	-19.0	G02	394465.0	5904546.0	1.417139	53.279626	-23.6
A04	388568.0	5902218.0	1.329549	53.257502	-19.2	G03	395070.0	5904056.0	1.426371	53.275343	-24.3
A05	387829.0	5902735.0	1.319782	53.262013	-18.8	G04	395675.0	5903566.0	1.435603	53.271060	-25.1
B01	391133.0	5902940.0	1.370468	53.265961	-21.5	G05	396281.0	5903076.0	1.444844	53.266785	-26.4
B02	390441.0	5902117.0	1.357649	53.256985	-19.9	G06	396225.0	5902259.0	1.444272	53.259423	-25.6
B03	389708.0	5902711.0	1.346460	53.262170	-20.5	H01	393086.0	5904243.0	1.396567	53.279627	-21.4
B04	389975.0	5903306.0	1.333268	53.267394	-19.3	H02	393320.0	5903949.0	1.407789	53.271438	-23.5
B05	388841.0	5904311.0	1.320910	53.276167	-18.2	H03	394553.0	5903055.0	1.418653	53.265246	-23.9
B06	387985.0	5903623.0	1.320354	53.269105	-18.2	H04	395287.0	5902461.0	1.430149	53.261054	-24.4
C01	390580.0	5903434.0	1.352278	53.268847	-20.1	H05	395234.0	5901196.0	1.423521	53.249698	-22.5
C02	389949.0	5904027.0	1.345102	53.274024	-19.8	H06	396170.0	5901440.0	1.443715	53.252053	-24.5
C03	389117.0	5904821.0	1.338937	53.279209	-19.4	T01	392212.0	5903533.0	1.383706	53.270071	-21.5
C04	388067.0	5905099.0	1.321478	53.283289	-19.4	T02	392948.0	5902936.0	1.394938	53.264896	-22.1
C05	389153.0	5905897.0	1.322040	53.290382	-19.4	T03	394241.0	5902496.0	1.415137	53.262620	-21.8
C06	388339.0	5906675.0	1.322002	53.297474	-20.0	T04	394874.0	5901875.0	1.426312	53.257737	-22.3
D01	390741.0	5904726.0	1.361247	53.280489	-21.7	T05	394840.0	5901651.0	1.424742	53.255832	-21.2
D02	390006.0	5905323.0	1.350222	53.285702	-20.9	J01	392777.0	5901653.0	1.392808	53.253293	-23.1
D03	389271.0	5905920.0	1.339789	53.290913	-21.1	J02	393599.0	5901090.0	1.403974	53.248112	-22.5
D04	388420.0	5907213.0	1.340577	53.302582	-20.2	J03	394107.0	5901145.0	1.413569	53.251024	-21.7
D05	388871.0	5907630.0	1.333561	53.308910	-20.3	J04	394315.0	5907562.0	1.417208	53.216841	-22.2
D06	388265.0	5907463.0	1.323165	53.304599	-20.3	J05	394954.0	5907046.0	1.426945	53.212322	-21.3
E01	391477.0	5904129.0	1.372469	53.275276	-22.2	K01	392045.0	5902246.0	1.391939	53.269473	-21.5
E02	391919.0	5905431.0	1.374170	53.287004	-22.4	K02	391907.0	5900928.0	1.380019	53.246602	-21.2
E03	390889.0	5906025.0	1.362975	53.292191	-20.7	K03	392940.0	5900334.0	1.391200	53.241413	-20.8
E04	391033.0	5906169.0	1.361776	53.293777	-20.6	K04	393373.0	5900739.0	1.402376	53.238214	-21.0
E05	390220.0	5907076.0	1.352448	53.305586	-21.5	L01	393976.0	5900879.0	1.407470	53.231359	-21.8
E06	389624.0	5908466.0	1.343201	53.313883	-21.1	L05	391174.0	5901522.0	1.388835	53.251789	-21.0
F01	392263.0	5904637.0	1.385377	53.281817	-21.7	L02	391122.0	5900146.0	1.398526	53.239433	-19.9
F02	392549.0	5905266.0	1.389654	53.289160	-23.2	L03	391769.0	5900691.0	1.378257	53.244918	-20.2
F03	392949.0	5906016.0	1.389417	53.292470	-22.8	L04	392390.0	5901114.0	1.388002	53.234002	-21.0
F04	392044.0	5906506.0	1.380177	53.296750	-22.4	L05	393038.0	5901650.0	1.397745	53.225877	-20.6
F05	391439.0	5906966.0	1.370936	53.301030	-22.0	Sub St	391870.0	5902955.0	1.378776	53.264808	-21.1

#### Legend Main Map

- ▲ WTG Layout Design Basis
- Exclusion Zone
- Sub Station
- Planned Interarray Cable Route
- Planned Export Cable Route
- Consented Field Outline
- Bathymetry (m rel. to LAT)
  - < -26
  - 24 -28
  - 22 -24
  - 20 -22
  - 18 -20
  - 16 -18
  - 14 -16
  - 12 -14

NO	DATE	ISSUED FOR INFORMATION	STATUS	REVISION	APPROVED
01	10.03.2018	ISSUED FOR INFORMATION	ISSUED	REVISION	APPROVED
02	26.02.2018	ISSUED FOR INFORMATION	ISSUED	REVISION	APPROVED
03	27.11.2014	ISSUED FOR INFORMATION	ISSUED	REVISION	APPROVED

PROJECT NAME: Dudgeon Offshore Windpark

STATOIL

WTG and Substation Locations

Scale: 1:50000

Sheet: A3

Project: C17-DOW-NXK-0001-01

Sheet No: 04

**ESVAGT NJORD**



**Call sign:** OWZN2

**Bridge Phone:** VSAT.TEL: +45 32 71 26 89; / GSM: +45 32 71 26 85

**E-mail:** njord@esvagtvesel.com