

NOTICE TO MARINERS

DUDGEON OFFSHORE WIND FARM CONSTRUCTION WORKS

NOTICE IS HEREBY GIVEN that construction activities are in progress at the Dudgeon Offshore Wind Farm and Export Cable Corridor.

Foundation installation is completed and the offshore substation has been installed. Inter array cable burial and preparation for wind turbine generators is ongoing. Wind turbine generators will be installed in the first half of 2017. All construction work is planned to be completed in late 2017.

Service Operation Vessel

The ESVAGT NJORD will be performing preparation support for the operation of the wind farm and will be in regular transit between the Dudgeon site and Great Yarmouth.

Inter-Array Cable Burial

The GRAND CANYON will perform the burial of the Inter-Array Cables to connect the wind turbines to the offshore substation. This operation is ongoing and expected to be completed in late November 2016.

Accommodation Vessel

The VESTLAND CYGNUS will be used as accommodation for engineers at the Dudgeon site and for transfer of personnel to wind turbine foundations and the offshore substation. VESTLAND CYGNUS will be operating at Dudgeon until late 2016. VESTLAND CYGNUS is supported by Crew Transfer Vessels.

The SEA CHALLENGER will be used as accommodation at the Offshore Substation in 2016, and will then be used to install the wind turbine generators in 2017.

Commissioning activities

For the commissioning work there are several Crew Transfers Vessels operating in the wind farm area on a daily basis. This activity is ongoing and will continue until commissioning is completed in Q4 2017.

Guard Vessel

The ADVENTURE will act as a guard vessel to safe guard the wind farm area. During port calls, the ADVANCE will be used as back-up. ADVENTURE will be on location from April - October 2016.

GENERAL

MARINERS ARE HEREBY INFORMED that a statutory construction Safety Zone (exclusion zone) is in place at the wind farm site. This safety zone is defined by:
A 500 metres radius around each wind turbine, offshore sub-station and their foundations whilst work is being performed as indicated by the presence of construction vessels; and

A 50 metres radius around each wind turbine, the offshore sub-station platform and associated foundation structures installed, complete or incomplete but waiting to be commissioned as part of the Dudgeon offshore wind farm where personnel are present on, or are being landed on or being taken from, the structures.

All vessels will exhibit appropriate lights and shapes prescribed by the International Regulations for Preventing Collisions at Sea.

ALL VESSELS ARE REQUESTED to give all construction and support vessels a wide berth.

MARINERS ARE ADVISED to navigate with caution and keep continued watch on VHF Ch. 16 when navigating the area.

A further notice to mariners will be issued when these works are completed, expected autumn 2017.

Please direct any enquiries regarding this notice to Statoil Wind Control Centre: statoilwindcontrol@statoil.com

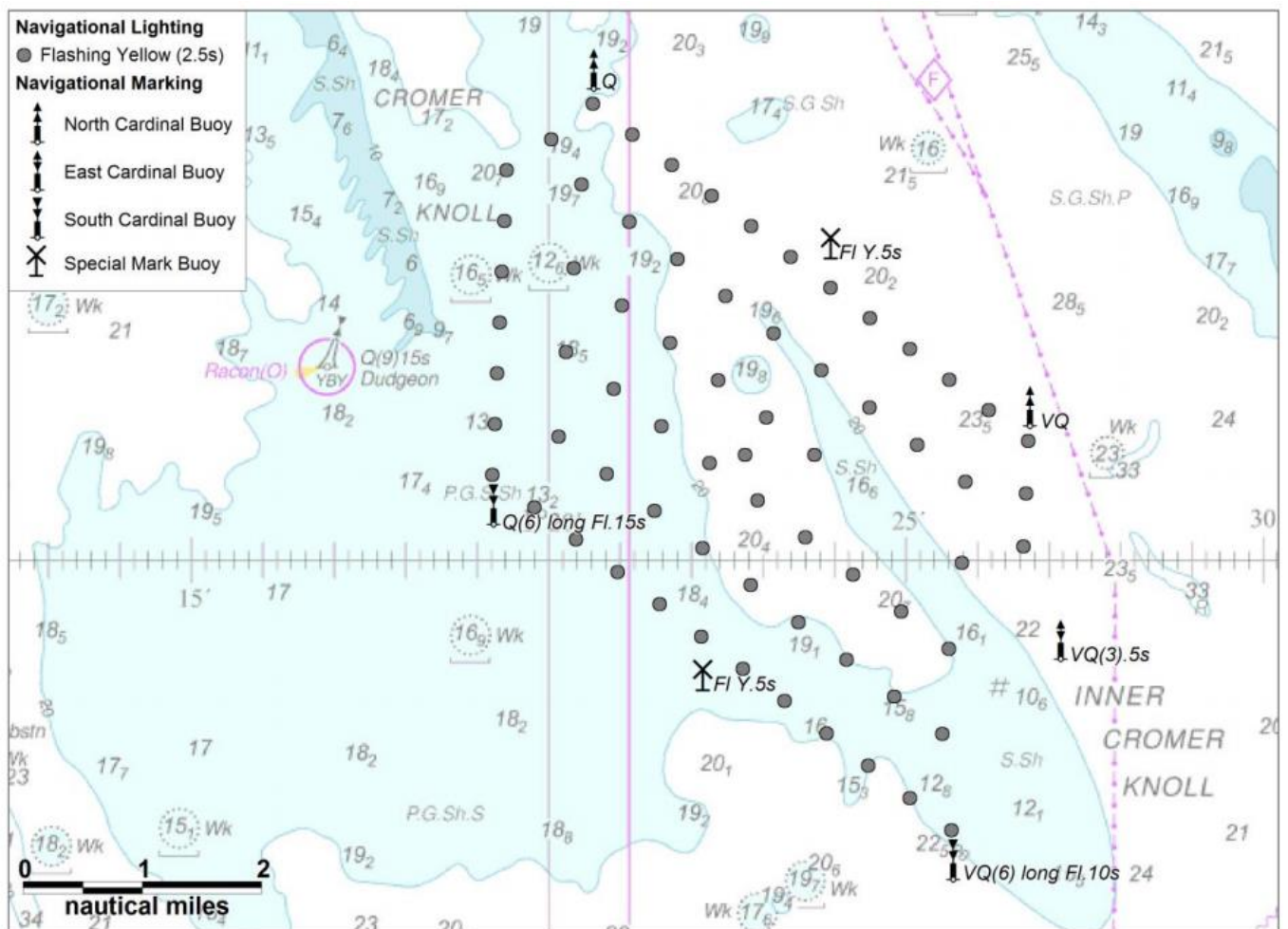
A copy of this notice can also be found at:

<http://dudgeonoffshorewind.co.uk/news/notice-to-mariners>

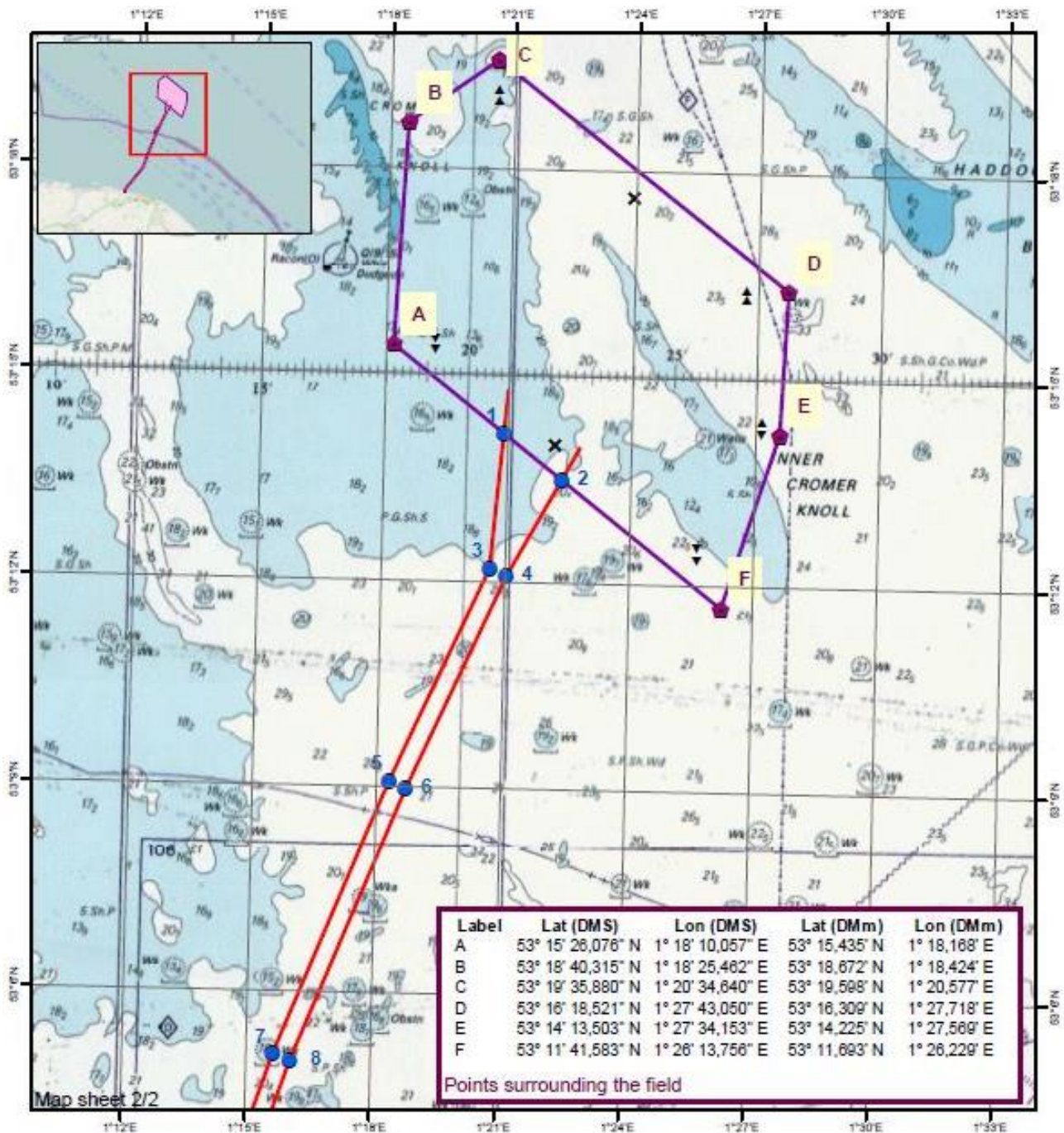
SITE DETAILS

Position of Navigation Buoys demarcating the Dudgeon Offshore Wind Farm site

Mark	Location	Name	Latitude	Longitude	Status	Flash Character	Code	Range
North Cardinal	NW Cardinal	N - DOW	53° 19,102' N	1° 20,592' E	Temporary	Q	601	5nm
Special Mark	Special Mark North	DOW - SM - N	53° 17,631' N	1° 23,919' E	Temporary	Fl.Y.5s	328	5nm
North Cardinal	North East Cardinal	NE - DOW	53° 16,277' N	1° 26,691' E	Temporary	VQ	501	5nm
East Cardinal	East Cardinal	E- DOW	53° 14,320' N	1° 27,123' E	Temporary	VQ(3).5s	508	5nm
South Cardinal	SE Cardinal	S - DUDGEON	53° 12,470' N	1° 25,617' E	Permanent	VQ(6) long Fl.10s	516	5nm
Special Mark	Special Mark South	DOW - SM - S	53° 14,012' N	1° 22,132' E	Temporary	Fl.Y.5s	328	5nm
South Cardinal	SW Cardinal	SW - DOW	53° 15,451' N	1° 19,188' E	Temporary	Q(6) long Fl.15s	631	5nm



Wind farm area and cable corridor north












Label	Lat (DMS)	Lon (DMS)	Lat (DMm)	Lon (DMm)
1	53° 14' 10,494" N	1° 20' 53,200" E	53° 14,175' N	1° 20,887' E
2	53° 13' 30,784" N	1° 22' 18,795" E	53° 13,513' N	1° 22,313' E
3	53° 12' 12,063" N	1° 20' 36,508" E	53° 12,201' N	1° 20,608' E
4	53° 12' 5,472" N	1° 21' 1,112" E	53° 12,091' N	1° 21,019' E
5	53° 9' 4,426" N	1° 18' 17,288" E	53° 9,074' N	1° 18,288' E
6	53° 8' 58,127" N	1° 18' 42,081" E	53° 8,969' N	1° 18,701' E
7	53° 5' 4,975" N	1° 15' 38,226" E	53° 5,083' N	1° 15,637' E
8	53° 4' 59,401" N	1° 16' 3,461" E	53° 4,990' N	1° 16,058' E

Points along export cable corridor

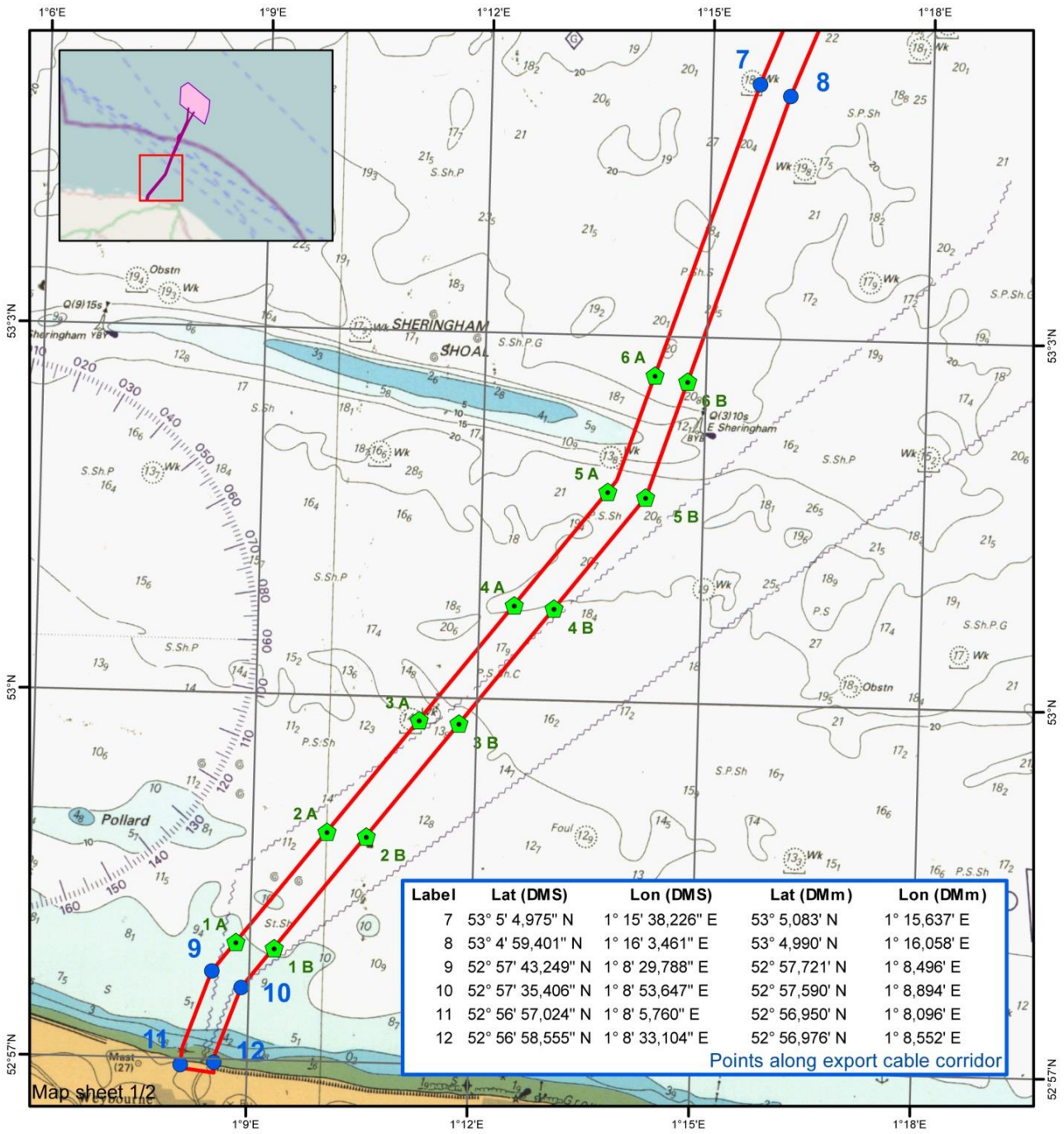


Legend

-  Flis Boundary Corner points
-  Field Boundary added 1000m
-  Survey Area - Export Cable, points
-  Survey Area - Export Cable
-  East Cardinal
-  North Cardinal
-  South Cardinal
-  Special Mark
-  West Cardinal



Cable corridor south and export cable landfall



Label	Lat (DMS)	Lon (DMS)	Lat (DMm)	Lon (DMm)
1 A	52° 57' 57,894" N	1° 8' 48,791" E	52° 57,965' N	1° 8,813' E
1 B	52° 57' 55,481" N	1° 9' 19,702" E	52° 57,925' N	1° 9,328' E
2 A	52° 58' 53,227" N	1° 10' 0,633" E	52° 58,887' N	1° 10,011' E
2 B	52° 58' 51,451" N	1° 10' 32,388" E	52° 58,858' N	1° 10,540' E
3 A	52° 59' 49,079" N	1° 11' 13,216" E	52° 59,818' N	1° 11,220' E
3 B	52° 59' 47,890" N	1° 11' 45,752" E	52° 59,798' N	1° 11,763' E
4 A	53° 0' 46,724" N	1° 12' 28,201" E	53° 0,779' N	1° 12,470' E
4 B	53° 0' 45,434" N	1° 13' 0,623" E	53° 0,757' N	1° 13,010' E
5 A	53° 1' 43,601" N	1° 13' 42,256" E	53° 1,727' N	1° 13,704' E
5 B	53° 1' 41,112" N	1° 14' 13,136" E	53° 1,685' N	1° 14,219' E
6 A	53° 2' 41,270" N	1° 14' 18,352" E	53° 2,688' N	1° 14,306' E
6 B	53° 2' 38,543" N	1° 14' 45,145" E	53° 2,642' N	1° 14,752' E

Points marking 1NM intervals from shore



- Legend**
- 1 NM interval from shore
 - Survey Area - Export Cable, points
 - Survey Area - Export Cable



KEY CONSTRUCTION VESSEL CONTACT DETAILS

GRAND CANYON



Call sign: 3EVR8

Bridge phone: V-sat: +47 22 03 44 99

Captain: V-sat +47 21 03 45 00 / Immarsat +870 773205466

E-mail: master@grand-canyon.no / Gc1bridgesupt@helixesg.com

ESVAGT NJORD



Call sign: OWZN2

Bridge Phone: VSAT.TEL: +45 32 71 26 89; / GSM: +45 32 71 26 85

E-mail: njord@esvagtvesel.com

SEA CHALLENGER



Call sign: OWLQ2
Bridge Phone: V-sat: +45 89 88 90 10
Master phone: vsat +45 89 88 90 11 / GSM +45 52 13 95 80
E-mail: seachallenger@a2sea.com / Master mast_sc@a2sea.com

ADVENTURE



Callsign: 2IFE4
Bridge Phone: V-sat 01947750717
E-mail: adventureGS@gmail.com / adventure.guard1@gmail.com

Advance WY77



Callsign: MZNA6

Bridge Phone: Sat. Phone: 00870773231090/01947 240024

E-mail: adventureGS@gmail.com